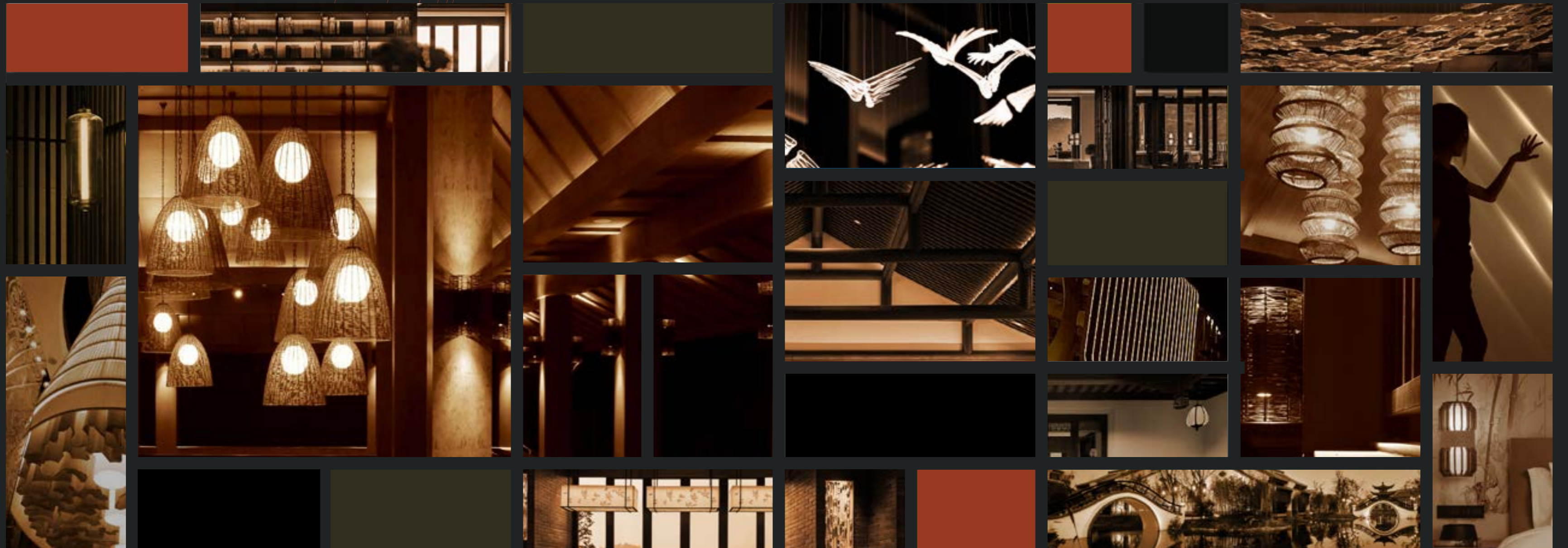




**SOCIALIGHT**  
CREATIVE LIGHTING STUDIO

LOOKBOOK



LOOKBOOK



01

COMPANY  
PROFILE

1.1 STUDIO	3
1.2 PHILOSOPHY	3
1.3 LOCATIONS	4



02

SERVICE  
OUTLINE

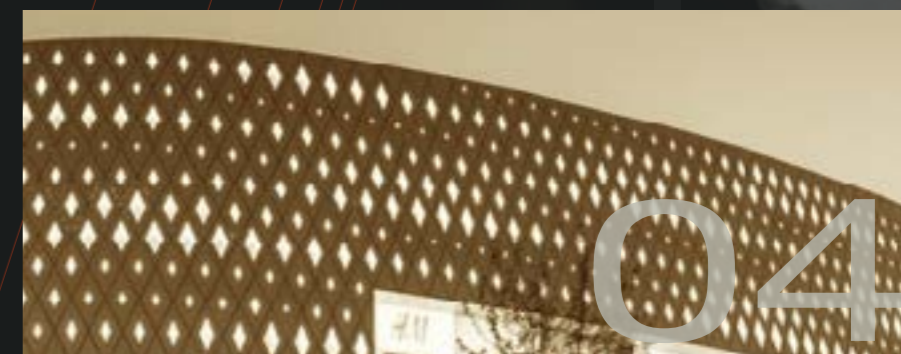


03

PROJECTS  
PORTFOLIO

HOSPITALITY	6
COMMERCIAL	30
RESIDENTIAL	42
SPECIAL	45

CONTACT  
US



04

SOCIALIGHT  
provides lighting  
design and  
consultancy  
services from  
project inception  
through to  
completion.

## THE STUDIO

Socialight is an independent lighting design studio dedicated to understanding and implementing light. We provide lighting design and consultancy services for a wide range of projects that requires effective, impactful and efficient lighting. The firm is derived its from its predecessor, LightingImages, which has practiced lighting design out of Australia and South-East Asia since 1994.

Our roots have led us to realign and rethink our value in the ever-changing real-estate industry and thus our strategic rebranding into Socialight. In an energy conscious and value driven day and age, we now advocate ourselves to create responsible, sustainable lighting solutions that are value-justified.

The firm functions out of Singapore, Jakarta and Ho Chi Minh City. This gives us the mobility to serve projects and clients in Asia effectively. Socialight is currently engaged in projects throughout China, South-East Asia, the Middle East and the Pacific. Our experience spans from lighting master-planning, architectural, interiors and landscapes in a multitude of developments, including transport infrastructures, hotels and resorts, retail malls, mixed developments, offices, monuments and residences among others.



With more than 10 design capable personnel, resources and expertise are shared between the studios seamlessly to deliver quality solutions appropriate to the needs of the project. With individuals from diverse academic background and prior industrial experiences, we aim to deliver economically and environmentally sensitive lighting designs and solutions that is beyond 'cosmetic' lighting. Sustainability and prudence in our design is strongly emphasized to maximize the value of the client's investment.

Our clients include government bodies, property developers, hotel brands, capital investment managers and individuals who require good lighting design and sound project consultation to ensure the design is implemented. At Socialight, we work solely to the interest of our clients.



Through light,  
SOCIALIGHT strives  
to improve the  
quality of everyday  
life.

Rohan founded Socialight in 2016 to succeed the Lighting Images Singapore to provide creative lighting design and consultancy in Singapore and Asia-Pacific.

Gathering his experience as a design director in his previous firm, and other preceding roles in lighting design and lighting related industries, he incepted Socialight for the purpose of delivering quality design work and diligent consulting.

Rohan found his passion lighting during his academic years while delving into light on his final thesis. He joined the lighting manufacturing industry in 2002 before making his progression into lighting consultancy. Since then, he has designed and completed various projects in the Asia Pacific region.

## PHILOSOPHY

Our approach is creative but practical. We believe that light firstly is a tool to aid vision before it is to fulfil design and spatial aspiration. As much as we want our lighting to be the focal of point of a project, we understand that it is a tool to enhance the architectural space and support its function. How light interacts with volumes and surfaces, and how it facilitate the tasks that occupiers do within that space should drive the lighting solution. We will however create delightful lighting moments when it is appropriate. Our objective is to create a sense of place and a memorable environment.

We are also very committed to serving our clients and ensuring that the lighting solution we propose is value for money. The outcome of our work should contribute to the real estate value, increase reliability and is sustainable. We ensure that our work are always code compliant, energy efficient and maintainable.

Our operations is sustained purely by fee based work. We have no affiliations with any other faculty in the lighting industry. That way, we can provide impartial advice and work solely to the interest of our clients.

We seek clients that subscribe to good lighting that is visually pleasing, energy efficient and cost effective.

## MORE ECO LESS EGO



SOCIALIGHT

## LOCATIONS

BANGLADESH

MYANMAR

VIETNAM

CHINA

THAILAND

CAMBODIA

MALAYSIA

SRI LANKA

### SINGAPORE

300B JOO CHIAT ROAD,  
409015.

SINGAPORE

### JAKARTA

JLN. ASEM II , NO. 10, CILANDAK,  
SOUTH JAKARTA 12410 INDONESIA

INDONESIA

## SERVICE OUTLINE

Socialight provides a full range of lighting design services depending on the needs of the client and our assessment of what the project requires. This is usually packaged in phases that best suit the project needs, including concept and schematic designs, lighting calculations, renderings, custom fixtures, detailed design, bid or tender documents, contract administration, site supervision and commissioning.

Our work are delivered via illustrations, words, diagrams, sketches, CAD drawings, lighting models and mock-ups to develop and convey our ideas and designs. We explore our clients' design challenges thoroughly, with sensitivity and ingenuity, resulting in integrated, creative and appropriate solutions that meet their specific lighting needs.

We maintain an electronic network that allows us to collaborate without borders. Our work are carried out via 3D software such as Sketchup, CAD, dialux, AGI and Photoshop as well as the staple usual array of utilitarian office programs that include both hand sketches and computer-based images to illustrate lighting intent and effects.

The phases below categorizes the work that are carried out in each phase. The contents however are customised based on the project

### 1 CONCEPT DESIGN

We prefer to be involved in the project from its inception to fully understand the dynamics of the project and consider what are the design possibilities that can be infused with the architecture.

- Site evaluation, project schedule and study information
- Listen to stakeholders' goals and budgets
- Understand Architect/Designer intent
- Conceptualise ideas, presentation
- Preliminary budget estimates

### 2 SCHEMATIC DESIGN

This stage is to strengthen the concept and to articulate the ideas into workable solutions. Calculations, layouts, control strategy is produced to ensure the design complies with technical and efficiency standards.

- Articulate concept design
- Preliminary layouts on CAD and equipment schedule
- Outline of lighting control strategy
- Provide light calculations where necessary
- Loading schedules and looping
- BOQ and updated budget estimates

### 3 DESIGN DEVELOPMENT

Once the technical parameters and electrical requirements are coordinated, our work progresses into finer detailing that includes spot details, architectural integration, cabling issues and a finalised cost estimate of the overall lighting system.

- Coordination on architectural and mounting details.
- Final layouts, elevations and details on CAD
- Equipment Specifications, control schedules and BOQ
- In-house mock up on important items
- Design revisions to reduce budget
- Agreed control strategy and operating schedule
- Final budget schedule

### 4 BID/TENDER DOCUMENTATION

The final document package will be converted to lighting tender package ready to be issued by client/QS. Following returns, we will evaluate all submissions and participate in technical assessment, questionnaires, interviews and recommendation.

- Lighting Tender package
- Evaluate submissions from contractors
- Provide report, questionnaires and addenda
- Submit recommendation

### 5 CONSTRUCTION MONITORING

During the construction period we will attend to queries and technical issues from contractors. Periodic site visits will be conducted to inspect and instruct contractors on any issues detected.

- Review mock ups and advise fine adjustments
- Answer queries and issues from contractors
- Contract administration and progress claims if necessary
- Redesign minor architectural changes or site constraints

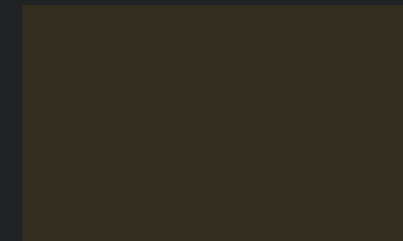
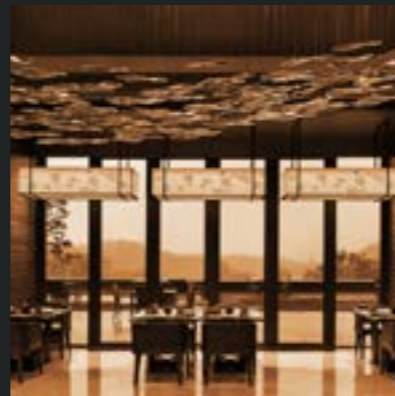
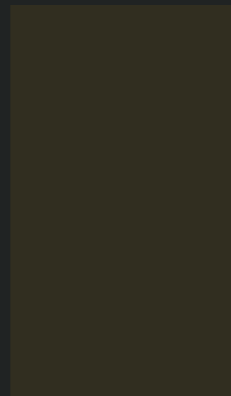
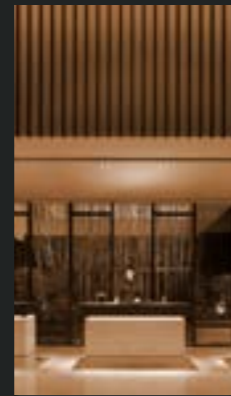
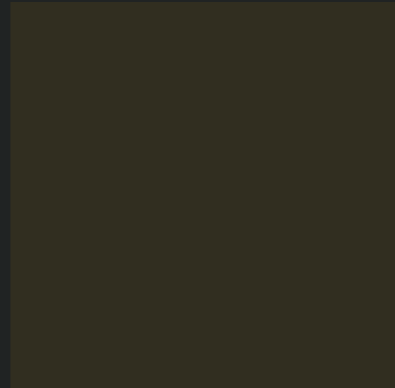
### 6 POST CONSTRUCTION

Towards the completion of the project, site visits will be more frequent to start with final adjustments and aiming of luminaires, as well as advising on the luminaires and scene settings. This is usually done in stages as areas complete. A site walk with stakeholders will be conducted to show the lighting effects.

- Aiming and adjustments of lighting equipment
- Provide scene schedules
- Supervise scene and lighting control programming
- Provide a defects list
- Site show round

Our completed project shows both our awareness of lighting as an essential part of the built environment and the human factor that are often neglected in lighting design. We emphasize our clients needs and aspirations and aim for a mutually beneficial relationship with them in every project that we embark on.

## HOSPITALITY



**Lighting design** in hotels and resorts is a necessity. It is an important element that defines the ambience and leaves a lasting impression on guests. Good lighting that evokes relaxation, comfort, and even intrigue will determine how guests rate their experience and therefore the feelings that is associated with their stay. Most of the time, the effect light has on the architecture and decor of the hotel is not really noticed or can it be quantified. Guests just feel right.

The lighting design philosophy for the hospitality environment requires a balanced approach of serving the human visual needs, the architectural design, hotel branding and the locality of the development. This also needs to be balanced with the engineering, maintenance and cost aspects of the development.

Socialight has a well established track record in hospitality, which spans from city hotels to remote resorts with many clients returning to seek our involvement in their upcoming projects.

## COMPLETED

### RESORTS

Westin Resort Haitang Bay Sanya

Movenpick Phan Thiet

Banyan Tree Anji

Angsana Resort Xi'an Lintong

Hilton Fuxian Lake Yunnan

Banyan Tree JiuZhaiGuo

Xixuan Spa Xixi Wetlands Hangzhou

Anantara XiShuangBanNa

Anantara Sanya

Anantara Jebel Sifah

Marriott Taihu Lake Suzhou

Renaissance Taihu Lake, Suzhou

Xixi Yueju Hangzhou

Hilton Riverside Nanjing

Doubletree Chengdu

Radisson Blu Wuhan

JW Marriot Shenzhen

Hilton Hangzhou QianDao Lake

Holiday Inn, Hangzhou

Hilton Clearwater Bay Sanya

Crowne Plaza XiShuangBanNa

JW Marriot Clearwater Bay Sanya

Angsana Resort Zhuhai

Sheraton Xixi Wetlands Hangzhou

Hilton Huizhou Longmen

Marriot & Courtyard Jiu Zhai Gou

Hyatt Regency Chongming Island

Intercontinental Resort Sanya

Sheraton Qingdao

### HOTELS

Pullman Orchard Singapore

Melia Hotel Myanmar Centre Yangon

Doubletree Hangzhou

The Oriental Hotel

Hilton Zhuzou

Hilton Garden Inn Dandong

Marriot Hotel Luwan Shanghai

Hilton Wuhan Riverside

Sheraton Qingdao

Courtyard Shunde Longjiang

Big Hotel Middle Road

Aqueen Jalan Besar

Hilton Haikou

Ibis 2020 Guest rooms

### RESTAURANTS

Le Planteur Yangon

Nahm Bangkok

Shanghai Tang XinTianDi

## ONGOING

Shangri-La Phnom Penh

Clouhaus Kuala Lumpur

Alila Cemara Beach Lombok

Radisson Collection Galle

Courtyard Lampung

Majestic Sharm El Sheikh

Alila Bao Dai Nha Trang

Hyatt Centric Cam Rahn Bay

Intercontinental Vinh Phuc

Nobu Hotel Da Nang

MGallery Ha Long Bay



## PULLMAN ORCHARD | SINGAPORE

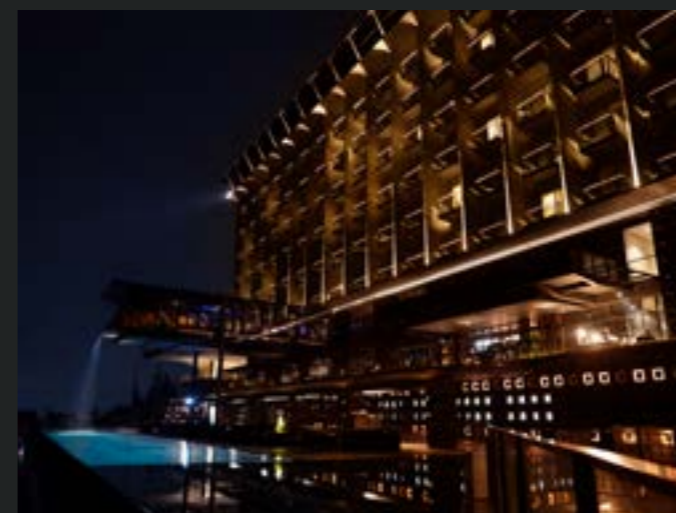
Pullman Orchard Singapore is located in the heart of the vibrant Orchard Road shopping district. It offers guests an ideal base for exploring the city's cultural attractions, world-renowned shopping malls, and culinary delights. The lighting features a dynamic ceiling at the lobby that mimics passing clouds and an experiential tunnel that features colored lighting.

### SCOPE OF WORK

- Façade
- Landscape
- Front of House
- Accommodation

### PROJECT INFORMATION

- Developer : New Park Properties
- Architect : DP Architects
- Interior Designer : EDG
- Completion : 2023



## GAIA HOTEL | BANDUNG

Gaia Hotel Bandung is a contemporary boutique hotel located in the heart of Bandung, Indonesia. The hotel offers a luxurious and comfortable stay for travelers seeking a convenient location with easy access to the city's top attractions. Socialight was engaged to provide lighting for all public areas in the hotel.

### SCOPE OF WORK

- Facade
- Landscape
- Front of House
- Accommodation

### PROJECT INFORMATION

- Developer : P.T. Gaia
- Architect : Ferry Ridwan
- Interior Designer : Willis Kusuma
- Completion : 2023





## DUSIT THANI | SINGAPORE

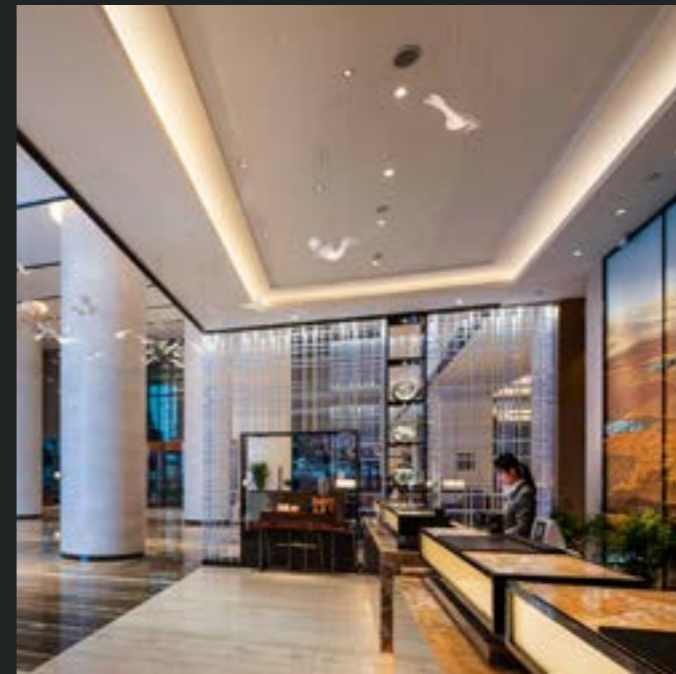
Recently opened golf and spa resort located in the east of Singapore. The resort consist of 280 rooms and 8 villas nestled with a golf course. Socialight was engaged to provide the exterior and interior lighting design for the resort, golf club and spa, which was housed within a beautifully designed structure. The facade lighting highlights the modern architectural form while the interior lighting is designed to the hospitality language that is synonymous to the Dusit Thani brand.

### SCOPE OF WORK

- Facade
- Landscape
- Front of House
- Accommodation

### PROJECT INFORMATION

- Developer : Laguna Hotel Holdings
- Architect : Mercurio Design Labs
- F&B Designer : Sempre
- Completion : 2021



## HILTON | ZHUZHOU

The property sits beside the Xiangjiang river, overlooking Zhuzhou's city skyline. The design of public spaces was modern with glowing acrylic strips and glass swallows sweeping across the lobby from the entrance to the reception. The facade lighting took inspiration from the reflection of the city skyline on the rippling river. The development opened in late 2014.

### SCOPE OF WORK

- Façade
- Landscape
- Front of House
- Accommodation

### PROJECT INFORMATION

- Developer : TBC
- Architect : Shanghai Xiandai
- Interior Designer : PAL Design
- Completion : 2014



### MARRIOTT TAIHU LAKE | SUZHOU

The Marriott is situated beside its sister brand, Renaissance, at the banks of Taihu Lake within the Yangtze River Delta Region. The hotel houses 275 guest rooms and amenities that is standard for the Marriott brand. The architecture and lighting is meant to sit discreetly within its locality with the Yuyang Mountains providing a serene, quiet backdrop, and thus the facade lighting is minimal and complemented by the interior lighting.

#### SCOPE OF WORK

- Façade
- Landscape
- Front of House
- Accommodation

#### PROJECT INFORMATION

- Developer : Suzhou Taihu Cultural
- Architect : H2 Architecture
- Interior Designer : TBC
- Completion : 2017



### WESTIN HAITANG BAY | SANYA

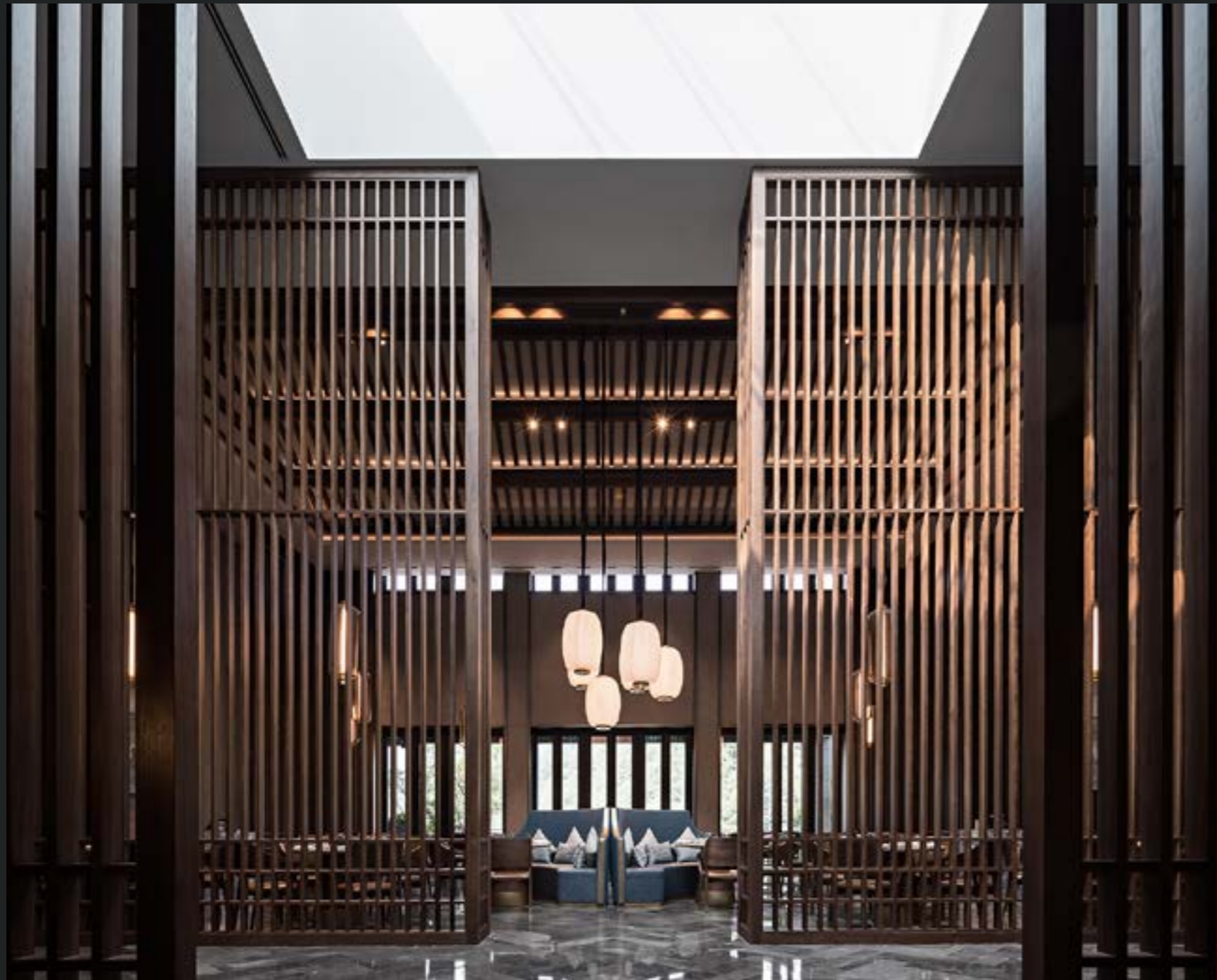
One of the premier resorts to line the Haitang Bay coastline is the Westin resort which was opened in late 2013. The resort features an extensive water park which included a 'lazy river' and a generous beach front bar. Socialight was commissioned to provide lighting design for the entire development including an exclusive clubhouse and residential villas.

#### SCOPE OF WORK

- Facade
- Landscape
- Front of House
- Accommodation

#### PROJECT INFORMATION

- Developer : Hainan Jianfeng
- Architect : TBC
- Interior Designer : HBA
- Completion : 2013



## BANYAN TREE | ANJI

The property sits in the largest bamboo forest in within an eco-tourism region. The architecture and interior design is sensitively integrated into the topography of the site so as to keep its profile discreet and well hidden. A clean, precise lighting approach was taken for the interiors to highlight whole surfaces and architectural features. Discreet down-lighting is then laid over to provide the focal glow.

### SCOPE OF WORK

- Facade
- Landscape
- Front of House
- Accommodation

### PROJECT INFORMATION

- Developer : Greentown Group
- Architect : GAD Architects
- Interior Designer : ZSD + CL3
- Completion : 2018

## ANGSANA RESORT | XIAN

Located in the historic city of Xian, and close to significant archaeological sites such as the Terracotta Warriors and the Tomb of the First Emperor, the resort is a very popular choice of accommodation. Socialight was commissioned to provide lighting consultancy to the entire development which also included a hot spring complex and state guest houses. The development opened in late 2014.

### SCOPE OF WORK

- Facade
- Landscape
- Front of House
- Accommodation

### PROJECT INFORMATION

- Developer : Xi'an Tourism Investment
- Architect : BIAD
- Interior Designer : Architrave
- Completion : 2016





## RENAISSANCE TAIHU LAKE | SUZHOU

The Renaissance sits beside the Marriott property and shares the same pristine natural environment of Taihu Lake. The approach towards the exterior illumination is kept similar to Marriott where only a handful of feature architectural elements were highlighted so as to keep the night time environment undisturbed. The interior boasts a more vibrant vibe especially at the lounges and bars. It houses 550 guest rooms.

### SCOPE OF WORK

- Facade
- Landscape
- Front of House
- Accommodation

### PROJECT INFORMATION

- Developer : Suzhou Taihu Cultural
- Architect : Burgeoning Studio
- Interior Designer : P49 Deesign
- Completion : 2017





## HILTON FUXIAN LAKE | KUNMING

The resort was completed in late 2015 together with a tournament grade golf green and spa clubhouse. Situated at the southern banks of Fuxian Lake, close to the city of Kunming, the resort has become a popular destination for weddings and corporate events. Lighting of the facade was carefully considered and minimized to preserve the pristine night sky.

### SCOPE OF WORK

- Facade
- Landscape
- Front of House
- Accommodation

### PROJECT INFORMATION

- Developer : Mission Hills & YMCI Group
- Architect : SB Architects
- Interior Designer : ChengChung Design
- Completion : 2015



## HYATT REGENCY | CHONGMING

This resort is the first international hotel to be opened in the gazetted nature reserve of Chongming Island. Socialight was engaged to provide interior and exterior lighting design for the whole development. Light pollution was kept to a minimum with sparse facade lighting and low level illumination onto the landscape to ensure the preservation of the pristine night sky and minimal disturbance to wildlife.

### SCOPE OF WORK

- Facade
- Landscape
- Front of House
- Accommodation

### PROJECT INFORMATION

- Developer : Jinmao Properties
- Architect : JWDA
- Interior Designer : JWDA
- Completion : 2014





## CROWNE PLAZA XISHUANGBANNA | JINHONG

"Welcome to the village" was the lighting philosophy coined for this project to capture the genius loci of its location. Steeped in cultural influences of the 'Dai' tribe, the design aims to recreate a rural atmosphere through old lighting techniques that mimics naked flames and incandescent sources. A pagoda, temple, cock fighting ring and festive village forms part of the resort, and lighting plays a crucial role in lending it that rural, communal atmosphere.

### SCOPE OF WORK

- Facade
- Landscape
- Front of House
- Accommodation

### PROJECT INFORMATION

- Developer : YMCI Group
- Architect : Beijing Institute of Architectural Design
- Interior Designer : P49 Deesign
- Completion : 2013





## ANANTARA | SANYA

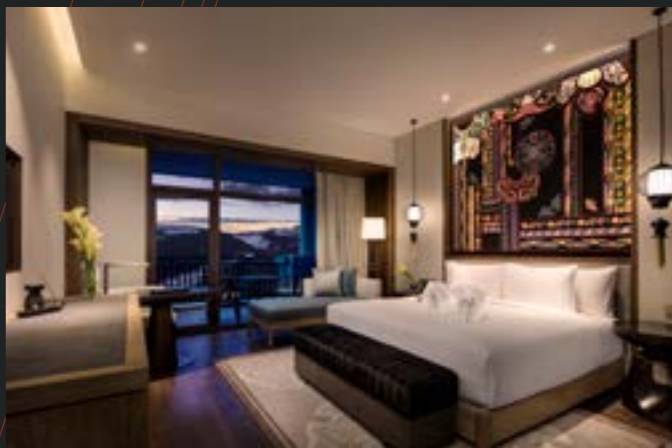
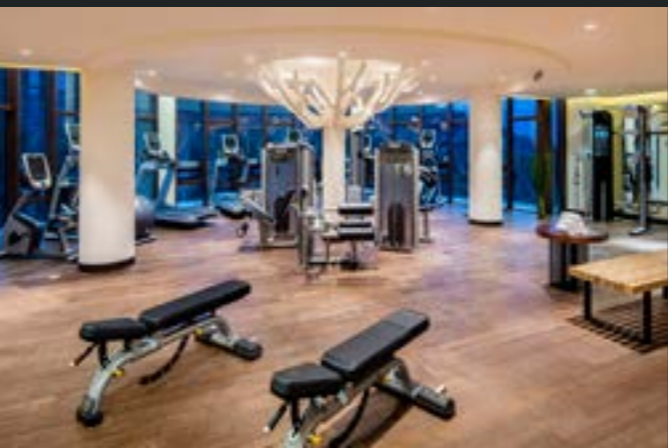
Anantara Sanya is set within lushly forested mountains overlooking the South China Sea. With other developments built around this resort, lighting was used as a strategy to differentiate this upmarket resort from its surroundings. The interior lighting was kept very subdued and ornate to reflect the Thai influence that is associated with the Anantara brand.

### SCOPE OF WORK

- Facade
- Landscape
- Front of House
- Accommodation

### PROJECT INFORMATION

- Developer : TBC
- Architect : TBC
- Interior Designer : P49 Deesign
- Completion : 2013



**BANYAN TREE | JIUZHAIGOU**

Set within very pristine surroundings in a UNESCO Heritage site, the resort is open only 6 months a year due to the extreme cold weather. We were engaged to provide lighting design for the exteriors, front of house and also guest rooms. As expected of a Banyan tree development the public areas are visual experiences that reflects the spirit of the place. Carpets embroidered with bright colours were highlighted by lighting.

**SCOPE OF WORK**

- Facade
- Landscape
- Front of House
- Accommodation

**PROJECT INFORMATION**

- Developer : TBC
- Architect : BIAD
- Interior Designer : Architrave
- Completion : 2014



## ANANTARA MENGLUN | JINHONG

Anantara Menglun is nestled in a remote mountainous region of the Yunnan province. The lighting design centres on minimal light pollution with low powered façade and landscape lighting. The interior lighting is relied on to provide illumination to the surrounding gardens and pathways. Rustic, ornamental lighting is used to provide the warm resort atmosphere together with discreet architectural light sources.

### SCOPE OF WORK

- Façade
- Landscape
- Front of House
- Accommodation

### PROJECT INFORMATION

- Developer : YMCI
- Architect : Yunnan Design Institute
- Interior Designer : P49 Deesign
- Completion : 2013



## HILTON GARDEN INN | DANDONG

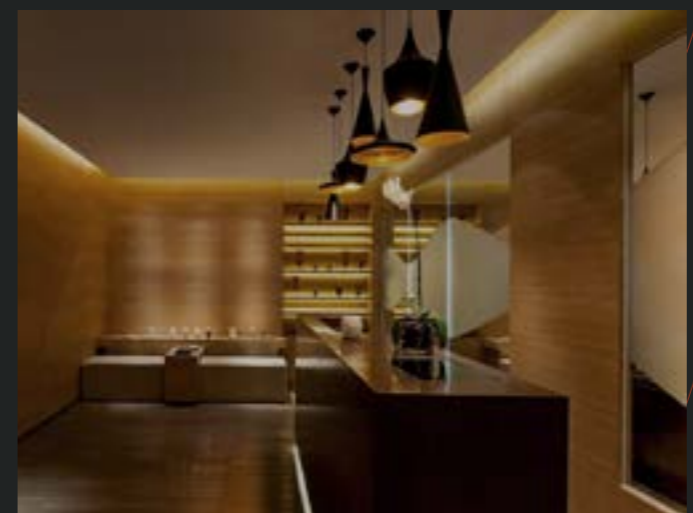
The city hotel is located in Dandong close to the North Korean border. The podium houses the hotel amenities as well as a small boutique mall while the accommodation is placed in the tower block. The lighting approach is simple with surfaces of the podium illuminated with grazing light that catches the patterns and textures of the cladding.

### SCOPE OF WORK

- Facade
- Landscape
- Front of House
- Accommodation

### PROJECT INFORMATION

- Developer : TBC
- Architect : Park J.S. Design Associate
- Interior Designer : Hassell
- Completion : 2014



## SHERATON XIXI WETLANDS | HANGZHOU

Nestled in the swamps and ponds of Xixi National Wetlands Park, Sheraton stands discreetly in natural surroundings. Socialight was engaged to design and commission the interior lighting of the public areas. Commissioning was carried out in Mid 2012 with the clear intention of minimizing the impact of the interior lighting on the sensitive ecosystem surrounding the development.

### SCOPE OF WORK

- Facade
- Landscape
- Front of House
- Accommodation

### PROJECT INFORMATION

- Developer : Westbrook
- Architect : TBC
- Interior Designer : WOW Design
- Completion : 2012

## XIXUAN SPA RESORT | HANGZHOU

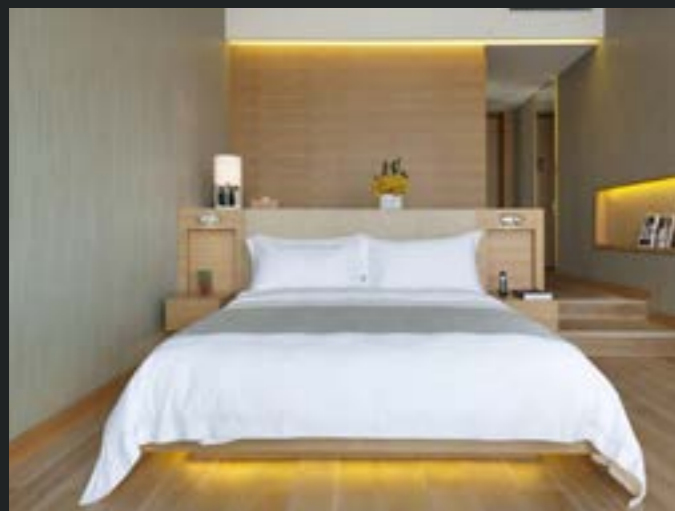
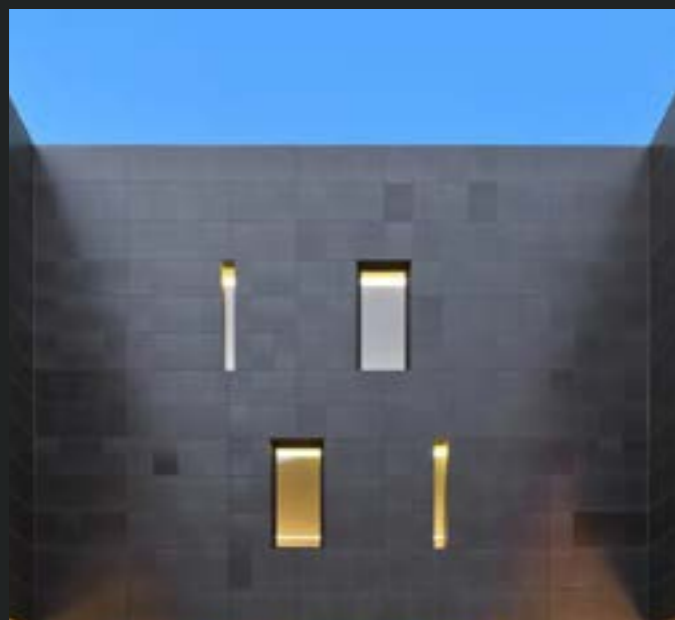
Located within the Xixi Wetlands nature reserve in west Hangzhou, the spa includes a full suite of wellness facilities. Lighting design was provided for the interior spaces and treatment suites.

### SCOPE OF WORK

- Front of House
- Accommodation

### PROJECT INFORMATION

- Developer : Westbrook
- Architect : RAD
- Interior Designer : RAD
- Completion : 2012







## HILTON QIANDAOHU | HANGZHOU

Hilton Qiandao (thousand Island) Lake Resort sits on the steep hillside of this man-made lake. The lobby and all day dining overlooks the lake and small fishing communities that dots the banks of the lake. The front of house is designed with local nuances and lighting played an important role of accentuating these features. The resort began its operations in early 2012.

### SCOPE OF WORK

- Front of House

### PROJECT INFORMATION

- Developer : TBC
- Architect : Shanghai Xiandai
- Interior Designer : Ivan Cheng
- Completion : 2012



## SHANGRI-LA FUTIAN | SHENZHEN

Shangri-La Futian is located in a new business district within Shenzhen. The hotel is luxuriously fitted with unique furniture, distinctive art pieces and elaborate chandeliers, giving it a relaxed, high end atmosphere that is non-typical of a business hotel. The lighting design revolves around dramatic contrasts with museum-like highlights of the art pieces while the chandelier glow provides sufficient base illumination.

### SCOPE OF WORK

- Facade
- Landscape
- Front of House
- Accommodation

### PROJECT INFORMATION

- Developer : TBC
- Architect : Shanghai Xiandai
- Interior Designer : Ivan Cheng
- Completion : 2012



## INTERCONTINENTAL HAITANG BAY | SANYA

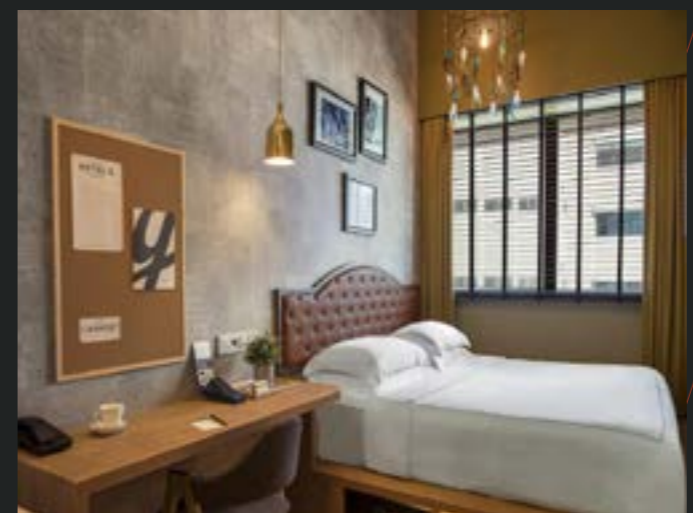
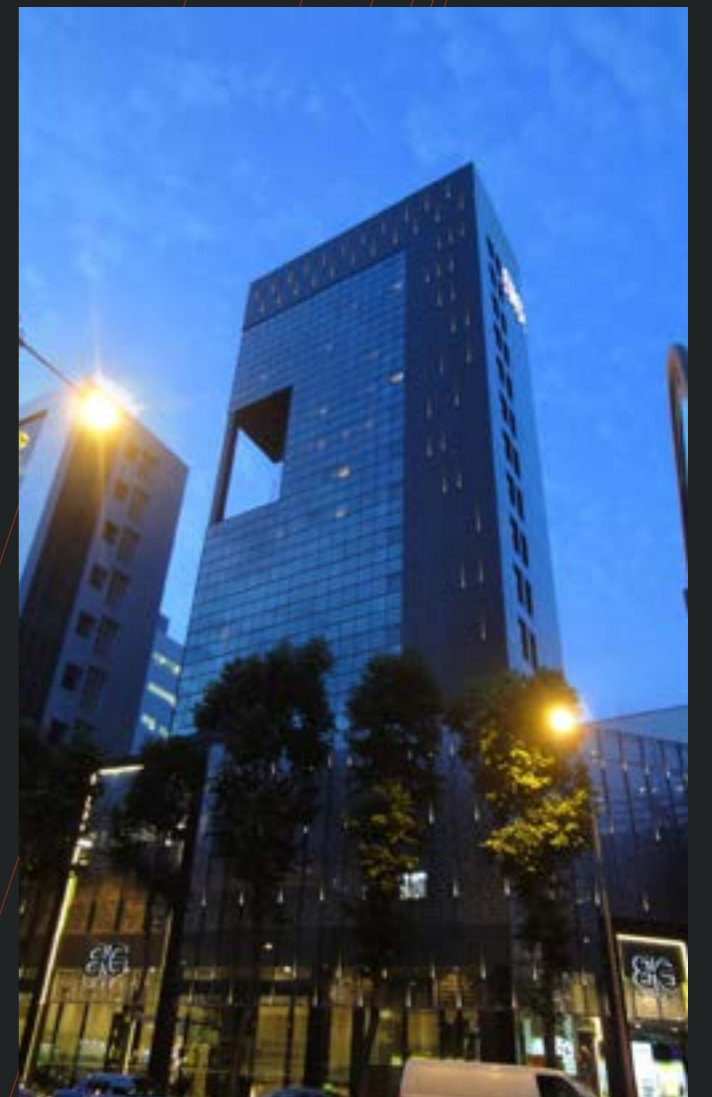
The Intercontinental Haitang Bay Resort, Sanya is a luxurious property boasting a large seawater aquarium where Aqua, its underwater restaurant is situated. Completed in June 2014, Socialight was engaged to provide lighting design for the whole development. The hotel is very highly rated by guests for its scenic views and spacious surroundings and we believe lighting played an important part in creating that serene, picturesque night time atmosphere.

### SCOPE OF WORK

- Facade
- Landscape
- Front of House
- Accommodation

### PROJECT INFORMATION

- Developer : Sanya XinTianFang
- Architect : CCDI & Archilier
- Interior Designer : HBA
- Completion : 2014



## BIG HOTEL | SINGAPORE

The BIG Hotel presents itself as a savvy business hotel in the heart of the Singapore's central district. timeline, cost and energy efficiency takes priority as this refurbishment project pushes for a quick turnaround. The hotel was finally completed using a versatile custom designed spotlight fitted with high efficiency LED bulbs.

### SCOPE OF WORK

- Facade
- Landscape
- Front of House
- Accommodation

### PROJECT INFORMATION

- Developer : ERC
- Architect : Ong & Ong
- Interior Designer : Ong & Ong
- Completion : 2014

## JW MARRIOTT RIVERSIDE | SHANGHAI

Situated across the river from the Shanghai Expo site, the project was completed in a very tight timeline and budget to open during the Shanghai World Expo. Socialight was engaged for the interior and facade lighting of this building. The design featured a hand crafted glass chandelier.

### SCOPE OF WORK

- Facade
- Landscape
- Front of House
- Accommodation

### PROJECT INFORMATION

- Developer : Greenland
- Architect : TBC
- Interior Designer : Architrave
- Completion : 2012



## ANGSANA RESORT | HANGZHOU

Angsana Hangzhou is part of the Westbrook resort development situated within the Xixi National Wetlands Park. Heavily influenced by the local architecture, exterior lighting is designed to emanate from the interiors, as if incidental. The interiors feature natural materials in neutral colours with lighting that is subtle and less dramatic, creating a relaxed atmosphere.

### SCOPE OF WORK

- Landscape
- Front of House
- Accommodation

### PROJECT INFORMATION

- Developer : Hangzhou Westbrook
- Architect : Shanghai Xiandai
- Interior Designer : Architrave
- Completion : 2012



## DOUBLETREE RIVERSIDE | HANGZHOU

Located in the historic city of Xian, and close to significant archaeological sites such as the Terracotta Warriors and the Tomb of the First Emperor, the resort is a very popular choice of accommodation. Socialight was commissioned to provide lighting consultancy to the entire development which also included a hot spring complex and state guest houses. The development opened in late 2014.

### SCOPE OF WORK

- Landscape
- Front of House
- Accommodation

### PROJECT INFORMATION

- Developer : TBC
- Architect : TBC
- Completion : 2014

## HILTON | NANJING

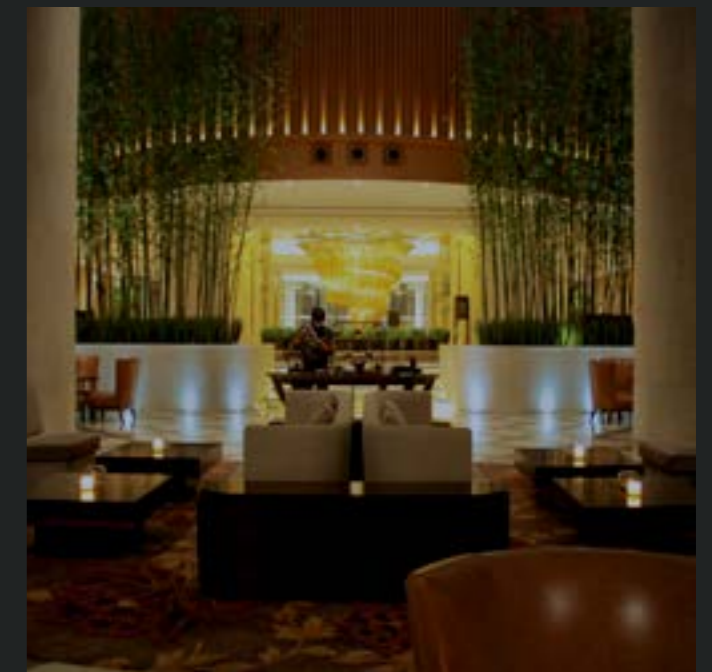
The hotel sits in the new business district of Nanjing, on the bank of the Yangtze river. The architecture and interior layouts of the hotel allows each guest room to enjoy a sprawling view of the river. The guest room lighting was carefully designed to ensure that glare and reflections are avoided so that guests can enjoy clear distant views.

### SCOPE OF WORK

- Facade
- Landscape
- Front of House
- Accommodation

### PROJECT INFORMATION

- Developer : YMCI Group
- Architect :
- Completion :



## THE GREENHOUSE | SINGAPORE

The Greenhouse Restaurant is located at the Dusit Thani Laguna and functions as the All Day Dining as well as a destination restaurant in Singapore. It is decorated with lush greenery, overlooking the golf course, giving diners a very unique, calming dining experience.

### SCOPE OF WORK

- Front of House
- Kitchen

### PROJECT INFORMATION

- Developer : Laguna Hotel Holdings
- Architect : AM Associates
- Interior Designer : Sempre
- Completion : 2021





## LE PLANTEUR | YANGON

Housed in a historic colonial building situated on the banks of the Inya Lake, Le Planteur offers French cuisine in a very unique setting. The whole restaurant was designed using LED lighting that enables it to keep the energy consumption manageable in an area where electrical power is limited.

### SCOPE OF WORK

- Facade
- Landscape
- Front of House

### PROJECT INFORMATION

- Developer : Yoma
- Architect : N/A
- Interior Designer : Delphine Delorme
- Completion : 2014



## NAHM RESTAURANT | BANGKOK

Nahm offer fine Thai dining and is situated within the compounds of COMO Bangkok. The lighting was upgraded as part of an inhouse refurbishment exercise.

### SCOPE OF WORK

- Public Area

### PROJECT INFORMATION

- Developer : COMO
- Architect : N/A
- Completion : 2019



## SHANGHAI TANG | SHANGHAI

Our task was to design the appropriate ambience for this flagship restaurant for the Shanghai Tang brand. The strong interior colours gave vibrancy with light accenting the colours strongly. Traditional artwork had lighting incorporated in them to give a dramatic feel to space as well as provide general ambient lighting.

### SCOPE OF WORK

- Facade
- Front of House

### PROJECT INFORMATION

- Developer : Shanghai Tang
- Architect : N/A
- Completion : 2010

## COMMERCIAL



Lighting design for commercial use should be fit for purpose. It needs to evoke the appropriate emotions while doing its job of accenting architecture and space. These emotional and aesthetic needs also needs to be balanced with technical parameters such as energy efficiency, operational preferences and cost.

While Socialight designs lighting to be within the recommended green standards for all of our projects, the benefit of an efficient lighting system is apparent in commercial buildings where lighting levels are high and the operating hours are prolonged, which can equate to higher operating costs and regular maintenance. Most office complexes are now designed with a diversity of amenities and features for the convenience of the tenants and their employees. As such these developments features a variety of experiences and lighting of offices should truly move beyond the basic need of satisfying lux levels and in the hands of engineers.

### COMPLETED

#### CORPORATE

61 Robinson Road  
Greenland Plaza Zhengzhou  
Summer Palace Shenyang  
Vivocity Shanghai  
The Bridge Phnom Penh  
Mapletree Business City Shanghai  
Intercontinental Tower Shanghai  
UOB Privilege Banking MBS  
SMF Exhibition Centre Singapore  
112 Katong Singapore  
Hongjia Tower Pudong  
Google IFC Shanghai  
Amicorp HQ Singapore  
77 Robinson Road  
Lifespace Mall Nanjing  
PSB Academy Marina Square  
KIC Shanghai  
Southern Asian Gate Kunming  
100 Beach Road Singapore  
MD Entertainment Jakarta

#### RETAIL

Vivocity Shanghai  
Kepelland Marina Zhongshan  
The Bridge Phnom Penh  
UOB Privilege Banking MBS  
112 Katong Singapore  
Lifespace Mall Nanjing

#### INSTITUTIONAL

PSB Academy Marina Square  
SMF Exhibition Centre  
KIC Shanghai

### ONGOING

Alpha Town HCMC  
Alpha City HCMC  
Harbour City Malacca  
Southgate Country Club HCMC  
The Peak Shoppes Phnom Penh  
Bitexco Manor Tower Lao Cai  
Robinson Centre



## 61 ROBINSON ROAD | SINGAPORE

61 Robinson Road is a high-rise commercial building located in the central business district of Singapore. The building is 28 stories high and has a net lettable area of approximately 135,000 square feet. Socialight played on the art-deco vibe of the building and created a lighting design that won an award by Singapore Institute of Architects.

### SCOPE OF WORK

- All areas

### PROJECT INFORMATION

- Developer : ARA
- Architect : Forum Architects
- Interior Designer : Brewin Design Office
- Completion : 2022



## GREENLAND PLAZA | ZHENGZHOU

This magnificent mixed-use development designed by SOM takes its inspiration from the Song-Yue Pagoda, constructed in 523AD. It houses a retail mall, Grade-A offices and a 5 star hotel and is LEED accredited. The facade lighting was modelled and calculated so as not to intrude to the interior spaces and also emit minimal light spill onto the night sky. The development began operations in late 2013.

### SCOPE OF WORK

- Facade

### PROJECT INFORMATION

- Developer : Greenland
- Architect : SOM
- Interior Designer : N/A
- Completion : 2014





## VIVOCITY | SHANGHAI

Completed in May 2017, Vivocity Minhang Shanghai is a welcomed addition to the Vivocity Mall chain in Asia. Socialight was engaged to provide lighting design services to the exteriors and interiors of the mall.

### SCOPE OF WORK

- Facade
- Landscape
- Front of House

### PROJECT INFORMATION

- Developer : Shanghai Linfeng
- Architect : Aedas
- Interior Designer : Aedas
- Completion : 2016



## GOOGLE IFC | SHANGHAI

The lighting design for this fit-out project had to meet strict energy compliance and cost constraints. Working closely with the project management team and client was crucial in completing this fast tracked project in time and within budget.

### SCOPE OF WORK

— All areas

### PROJECT INFORMATION

— Developer : Google Asia  
 — Architect : N/A  
 — Interior Designer : TBC  
 — Completion : 2015



## 77 ROBINSON ROAD | SINGAPORE

The addition and alteration works was carried out on this existing of-  
fice building situated in the downtown CBD area of Singapore. Social-  
light was engaged to redesign the lighting in conjunction with Forum  
Architects. The building is certified greenmark compliant.

### SCOPE OF WORK

- Facade
- Front of House

### PROJECT INFORMATION

- Developer : CLSA
- Architect : Forum Architects
- Interior Designer : Forum Architects
- Completion : 2018





## PSB ACADEMY MARINA SQUARE | SINGAPORE

Situated in a busy shopping Mall, PSB Academy campus is one of the most popular tertiary education academies in Singapore. Circadian Rhythm lighting was introduced into the academy due to its lack of natural lighting. With a tight timeline and limited resources, the budget for lighting has to be allocated in feature areas, theatres and where most required.

### SCOPE OF WORK

- Front of House

### PROJECT INFORMATION

- Developer : PSB Academy
- Architect : Architects 61
- Interior Designer : Architects 61
- Completion : 2018





## INTERNATIONAL CRUISE TERMINAL | SHANGHAI

Located at the North Bund along the Huangpu river, the project consists of 11 buildings. Rohan was the primary designer for the project under his previous stint within LDP.

### SCOPE OF WORK

- Facade
- Landscape

### PROJECT INFORMATION

- Developer : TBC
- Architect : Sparch / Frank Repas
- Interior Designer : N/A
- Completion : 2012

## AMICORP | SINGAPORE

Socialight was engaged to design for the front of house areas of this small office in Singapore. Aquamarine was chosen as the theme to bring a unique experience and effect at the main entrance and boardroom.

### SCOPE OF WORK

- Front of House

### PROJECT INFORMATION

- Developer : Amicorp
- Architect : N/A
- Interior Designer : Ethospace
- Completion : 2017



## HONGJIA TOWER | SHANGHAI

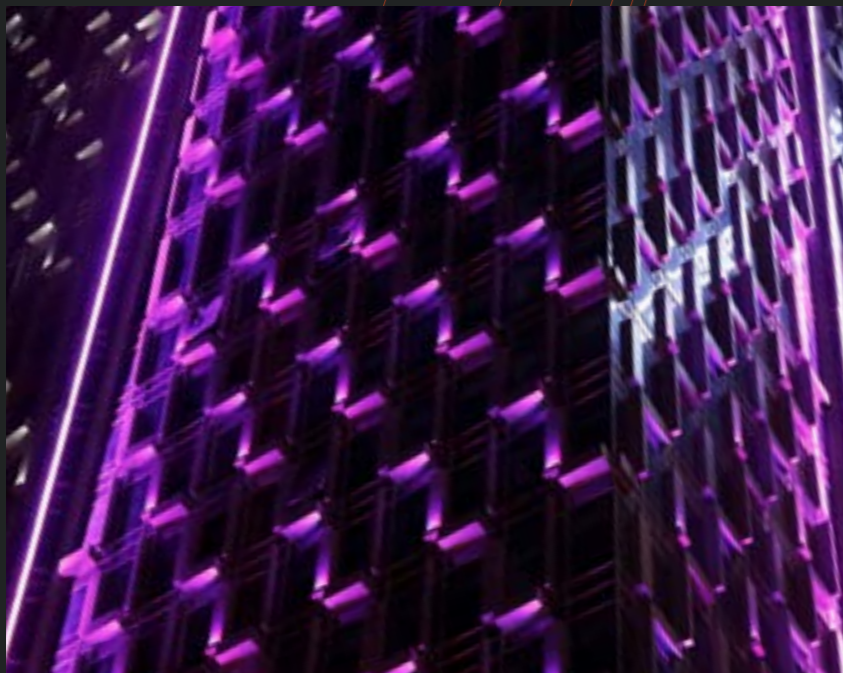
Socialight was engaged on the public areas of Hongjia Tower to ensure the lighting was in line with the sleek corporate image of this upgraded office building. Careful positioning and detailing of light was necessary to achieve a coordinated look with simple lighting equipment. The project was completed in record time with a limited budget.

### SCOPE OF WORK

- Front of House

### PROJECT INFORMATION

- Developer : CLSA
- Architect : N/A
- Completion : 2015



### ORCHARD SUMMER PALACE | SHENYANG

Designed by Tange Associates and executed by SAA Architects, the development consists of two 300m towers on a podium block. Socialight was engaged to provide the facade and landscape lighting.

#### SCOPE OF WORK

- Facade
- Landscape

#### PROJECT INFORMATION

- Developer : Shanghai Wearnes
- Architect : SAA Architects
- Completion : 2016

### BEACH CENTRE | SINGAPORE

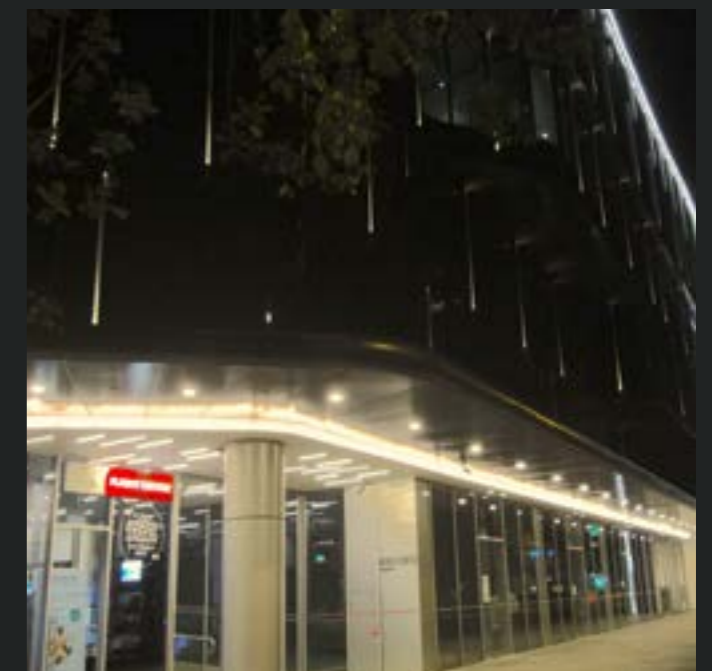
An existing building that was revamped to keep up with its surroundings, the Beach Centre houses offices and retail. Socialight was engaged to provide lighting to the facade and public interior areas.

#### SCOPE OF WORK

- Facade
- Front of House

#### PROJECT INFORMATION

- Developer : Asiawide
- Architect : DDA Resources
- Interior Designer : DDA Resources
- Completion : 2016





### TIMELESS | CITY OF DREAMS

The boutique timepiece shop is situated within the City of Dreams mall in Macau. It was completed in early 2012 and it featured interactive displays and unique showcases.

#### SCOPE OF WORK

- Front of House

#### PROJECT INFORMATION

- Developer : DFS
- Retail Designer : Fitch
- Completion : 2012

### UOB PRIVILEGE BANKING | MBS

Situated in Marina Bay Sands, this private banking outlet is clad by stretch membrane which was illuminated by LED arrays.

#### SCOPE OF WORK

- Front of House

#### PROJECT INFORMATION

- Developer : UOB
- Interior Designer : Ethospace
- Completion : 2013



## THE BRIDGE | PHNOM PENH

The mixed use development comprises of a retail mall at the podium and a mixture of hotel and private apartments within the 4 tower blocks. Socialight was engaged to enhance the presence of the development after it was completed.

### SCOPE OF WORK

- Facade
- Landscape

### PROJECT INFORMATION

- Developer : Oxley Holdings
- Architect : CKNA
- Completion : 2018



## CHINA WORLD MALL PHASE 1 | BEIJING

This mall was the flagship of Kerry Properties and it houses high-end brands. Built in the 1990s, The mall was revamped to incorporate current technologies and new materials. Cleanliness of the lighting layouts and design was crucial in amplifying the clean, avant-garde image of the mall. Lighting equipment is hidden as much as possible via diffused, non-intrusive lighting.

### SCOPE OF WORK

- Front of House

### PROJECT INFORMATION

- Developer : CWTC
- Interior Designer : Eightsixthree
- Completion : 2011





## 112 KATONG | SINGAPORE

Socialight was engaged to focus on the lighting of the exterior and interior areas to amplify the mall's branding as a premium lifestyle and F & B hub while keeping with the Peranakan culture Katong.

### SCOPE OF WORK

- Facade
- Landscape
- Front of House

### PROJECT INFORMATION

- Developer : Perennial
- Architect : DP Architects
- Completion : 2013

## SMF CENTRE | SINGAPORE

Commissioned by Singapore Media Foundation, the permanent exhibition uses interactive technology to raise awareness of Singapore's media industry. Socialight partnered with Pico Art to deliver our design services.

### SCOPE OF WORK

- Front of House

### PROJECT INFORMATION

- Developer : SMF
- Architect : Pico
- Completion : 2011



## RESIDENTIAL



### COMPLETED

#### CONDOMINIUMS

Metropole Galleria HCMC

UOL Esplanade Tianjin

Shui Du Li Shanghai

Hamilton Scotts Singapore

Iliv at Grange Singapore

#### RESIDENCE

Sentosa Cove House B17

Sentosa Cove House B16

### ONGOING

Kelapa Gading Residence

Metropole HCMC

The Opera HCMC

Alpha City HCMC

Southgate HCMC

The Peak Residence Phnom Penh

Mizuki Park HCMC

Mr. Bothra Residence

Socialight's engagement in residential projects includes bungalows, condominiums and high quality service apartments. Lighting design for a dwelling revolves very heavily on the lifestyle and preferences of the occupants. We take a very proactive approach in discussing the design and listening to the preconceived suggestions and ideas that the occupants may have of lighting. These ideas are integrated with the interior design to achieve a well-coordinated approach, where light enhances living experience.

A fully manageable lighting control system that senses daylight and occupancy is useful to ensure that the lighting is activated only when needed. This contributes to energy savings and reduced maintenance, which can be important considerations to the client. The outcome should be an integrated lighting system that is easy to manage and one that enhances the lifestyle of the occupants.

Socialight is also involved in the lighting design of residential complexes, where safety, light trespass and sustainability is important to maintain the quality and look of the development.



## THE GALLERIA | HO CHI MINH CITY

The Metropole, situated a cross the river from District 1 of HCMC, is a mixed development consisting of 3 residential towers and retail spaces along the ground floor of the podium.

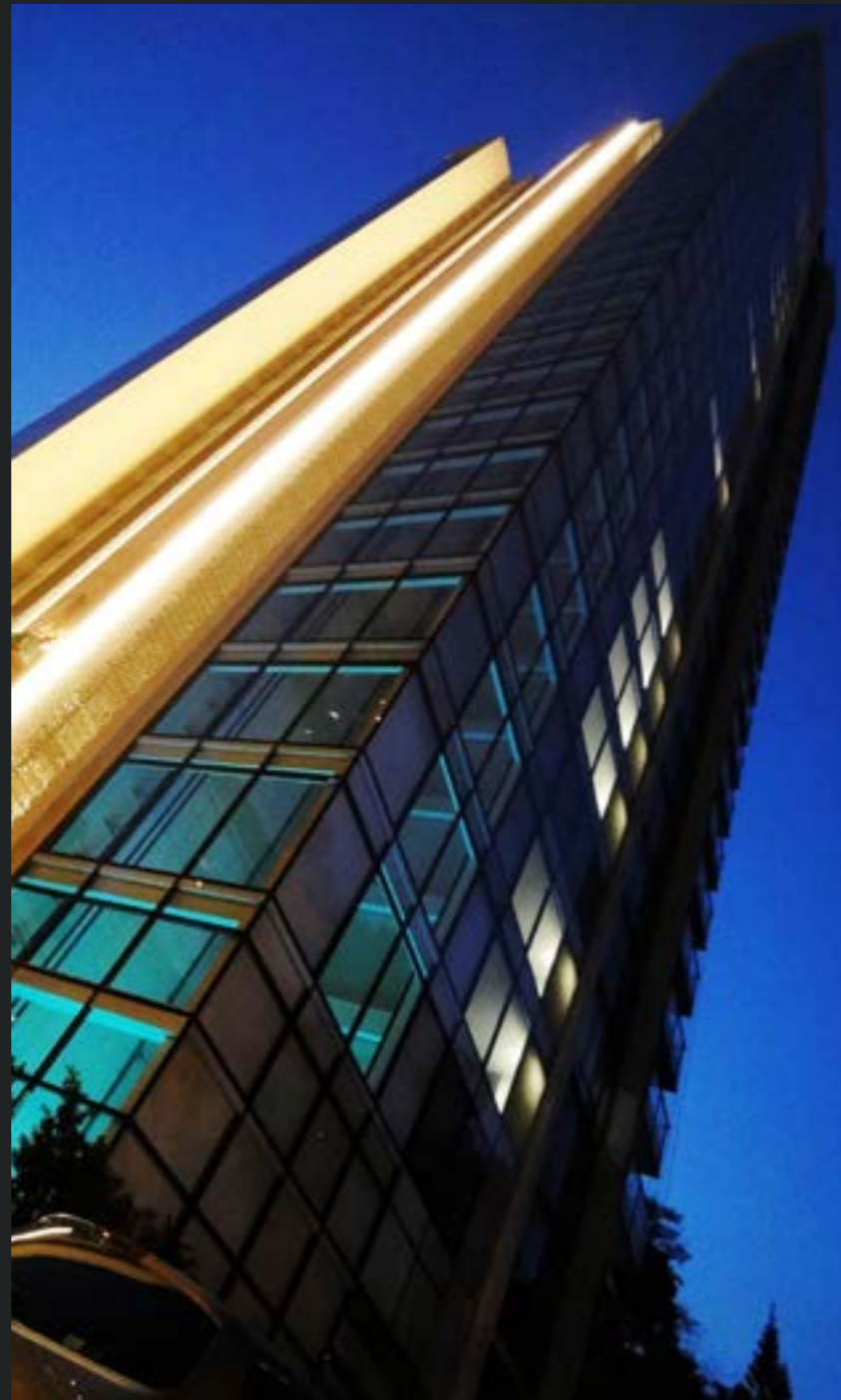
### SCOPE OF WORK

- Facade

### PROJECT INFORMATION

- Developer : Sonkimland
- Architect : DP Architects
- Completion : 2022





### ILIV GRANGE ROAD | SINGAPORE

This high rise residential located near Orchard Road in Singapore showcases a landscape designed by Yoo Starck. We were engaged by the architect to provide lighting design that emphasizes the uniqueness of the landscape. Completed in late 2013, high performance LED sources were used to achieve Greenmark status for the development.

#### SCOPE OF WORK

- Facade
- Landscape
- Front of House
- Accommodation

#### PROJECT INFORMATION

- Developer : Hutton
- Architect : AM Architects
- Completion : 2013



### HAMILTON SCOTTS | SINGAPORE

The main feature of this residential tower is the car lift that brings the car up to the residents' apartments. LightingImages was engaged to provide the exterior and public areas lighting, including a stage-like lighting system that highlights the car as it is transported from the ground floor up to the apartments.

#### SCOPE OF WORK

- Landscape
- Facade
- Front of House

#### PROJECT INFORMATION

- Developer : KOP Group
- Architect : AM Associates
- Completion : 2014

## SHUI DU LI | SHANGHAI

This old water-town was redeveloped into a mixed use development mainly consisting of residential and retail units within a network of waterways. Light shining on trees and building facades are positioned so that they are reflected off the water.

### SCOPE OF WORK

- Facade
- Landscape

### PROJECT INFORMATION

- Developer : TBC
- Architect : TBC
- Completion : 2008



## SENTOSA COVE RESIDENCE | SINGAPORE

Inspired by traditional Balinese architecture and material, this residence stands out amidst modern architectural houses along Sentosa Drive. The residence is used by the owner as a spa and wellness house.

### SCOPE OF WORK

- Landscape
- Facade
- Interior

### PROJECT INFORMATION

- Developer : Private owner
- Architect : TBC
- Completion : 2015

## SPECIAL



This section features a collection of specialty projects that has special meaning or projects that require specialised lighting approaches and techniques. We are keen to undertake project with special lighting needs which allows us to explore and learn more about light. It includes temples, statues, public infrastructure and monuments that challenges our technical capacity and creativity.

Understanding the physics of light in its basic form, applying it in context, and knowing how it reacts with surfaces and materials is always an exciting learning journey. Knowing that we are designing light for human vision does not only require us to rely on calculations and technical, but experience and experiment.

## COMPLETED

Garuda Wisnu Kencana Statue Bali  
Tuas West Extension MRT Stations  
Karma Kagyud Buddhist Centre  
Kepelland Marina Zhongshan  
Thomson Southern Line MRT Stations  
Ground Control to Major Tom Ilight 2016  
Perdana Botanical Gardens Revamp  
Desa Adat Kelan Football Field Bali  
Bukit Panjang LRT Stations  
Boon Keng MRT Station  
Mission Hills Clubhouse Kunming

## ONGOING

Minh Long Museum HCMC  
Mizuki Park Masterplan HCMC  
Southgate Masterplan HCMC  
North Hoi An Masterplan  
Lavender Spa HCMC



## GARUDA WISNU KENCANA | BALI

The Garuda Wisnu Kencana Statue stands at 136m above sea level at the southern tip of Bali. Socialight was engaged to provide an artistic interpretation of the statue through light and to emphasize its significance to the residents of Bali. The lighting system was made flexible and easily controllable by the operators, with the ability to tether into a larger lighting solution for future expansion.

### SCOPE OF WORK

— Facade

### PROJECT INFORMATION

- Developer : Alam Sutera
- Architect : P.T. Siluet Nyoman Nuarta
- Completion : 2018



Image courtesy of Keppel Corporation

**MARINA EAST PLANT | SINGAPORE**

The Marina East Desalination Plant is a large-scale water treatment facility located in Singapore. Its is designed to efficiently and effectively remove salt and other impurities from seawater to produce clean drinking water for the city-state's population. Socialight was engaged to provide the exterior lighting scheme that is inviting to the public and is sensitive to the surrounding flora and fauna.

**SCOPE OF WORK**

- Facade

**PROJECT INFORMATION**

- Developer : Keppel Corporation
- Architect : SAA
- Completion : 2019



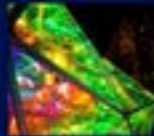
# GROUND CONTROL TO MAJOR TOM



OUTER SPACE IS DOLED WITH MYSTERIES OF LIGHT AND SHADOWS, VERY LITTLE IS KNOWN ABOUT OUTER SPACE. IT SPARKS IMAGINE, SCIENTIFIC FANTASY AND IS SUBJECT TO FRESH INTERPRETATIONS.

DESPITE THE DARKNESS OF SPACE, THERE ARE USABLE RADIANCE AND COLOURS THAT IS EMPHATICALLY PHYSICALLY KNOWN. THIS INSTALLATION TRIES TO DISPLAY SOME OF THE PHENOMENA AS INTERPRETED BY THE ARTIST. DAVID BOWIE'S SPACE ODYSSEY CAPTURES WELL THE UNCERTAINTIES OF SPACE EXPLORATION ALONG WITH ITS WASTELAND AND BEAUTY.

THE INSTALLATION AIMS TO EVOKE THE FEELING OF DARKNESS, WASTELAND, SOLITUDE AND AT THE SAME TIME, HOPE. IT TRIES TO LOOSELY RE-ENACT SOME OF THE COLOUR SPECTRUMS THAT NATURALLY OCCUR IN SPACE. A SPACE ROCKET IS THE CHOSEN VESSEL AS IT EVOKES THE PURSUAL RECOLLECTION OF CHILDHOOD FOR THE ADULTS AND FUN FOR THE YOUNG ONES.



PHOTOPHORETIC REFERENCE ART INSTALLATION INSPIRED BY DAVID BOWIE'S SPACE ODYSSEY.

THE ROCKET WILL TURN TRANSPARENT BY NIGHT AND REVEAL THE INTERIOR FACETS.



BY DAY FROM THE OUTSIDE, IT TURNS OPAQUE AND REFLECTIVE WITH COLOURS CHANGING DEPENDING ON



BY DAY FROM THE INSIDE THE CITY IS A MALLSCOPE OF COLOURS DUE TO THE DEBRIS PROPERTIES OF THE FILT.

REFLECTOR - A BLINDING SOURCE OF LIGHT VISIBLE FROM WIDE ANGLES AND IS USED TO ILLUMINATE THE INTERIOR.

DEBRIS - GLASS SLABS WITH DEBRIS FILLS THAT CHANGES COLOUR DEPENDING ON THE VIBRANT VIBRANT COLOURS LIGHT FROM SLABS IS CASTED INTO THE GROUND.

COINGS - 180° VIEW AND THAT BROKESIGHTS PERIPHERY OF GRAPHICS ARE ALSO BE REPLICATED BY LIGHT UP TOP LETTERINGS - INCLUDE SLABS WITH DEBRIS FILLS THAT CHANGES COLOUR DEPENDING

DEBRIS - MORE DEBRIS SLABS IN THIS SECTION TO CAST LIGHT INTO SURFACE.

WELD - LIGHT BARS ON THE OPPOSITE SECTION OF THE ROCKET AS A DEBRIS ELEMENT.

DEBRIS - MORE DEBRIS SLABS IN THIS SECTION TO CAST LIGHT INTO GROUND.

BROKESIGHT - RED, ORANGE AND YELLOW WINDS OF LIGHT UNDER THE ROCKET, SOME

REFLECTING

EFFECTS AND STRUCTURE REQUIREMENTS OF ALLOWING VISITORS TO EXPERIENCE FROM INSIDE.

THE POSSIBILITY AND IMPACT OF MULTIPLE VIEWS OF THE ROCKET.

THE EFFECTS OF SPREADING THE LIGHT SOURCE SLOWLY TO EXPAND THE COLOUR CHANGE FROM THE SURFACE.

THE EFFECTS OF SPREADING THE LIGHT SOURCE SLOWLY TO EXPAND THE COLOUR CHANGE FROM THE SURFACE.

THE EFFECTS OF SPREADING THE LIGHT SOURCE SLOWLY TO EXPAND THE COLOUR CHANGE FROM THE SURFACE.

THE EFFECTS OF SPREADING THE LIGHT SOURCE SLOWLY TO EXPAND THE COLOUR CHANGE FROM THE SURFACE.

THE EFFECTS OF SPREADING THE LIGHT SOURCE SLOWLY TO EXPAND THE COLOUR CHANGE FROM THE SURFACE.

THE EFFECTS OF SPREADING THE LIGHT SOURCE SLOWLY TO EXPAND THE COLOUR CHANGE FROM THE SURFACE.

THE EFFECTS OF SPREADING THE LIGHT SOURCE SLOWLY TO EXPAND THE COLOUR CHANGE FROM THE SURFACE.

THE EFFECTS OF SPREADING THE LIGHT SOURCE SLOWLY TO EXPAND THE COLOUR CHANGE FROM THE SURFACE.

THE EFFECTS OF SPREADING THE LIGHT SOURCE SLOWLY TO EXPAND THE COLOUR CHANGE FROM THE SURFACE.

THE EFFECTS OF SPREADING THE LIGHT SOURCE SLOWLY TO EXPAND THE COLOUR CHANGE FROM THE SURFACE.

THE EFFECTS OF SPREADING THE LIGHT SOURCE SLOWLY TO EXPAND THE COLOUR CHANGE FROM THE SURFACE.

THE EFFECTS OF SPREADING THE LIGHT SOURCE SLOWLY TO EXPAND THE COLOUR CHANGE FROM THE SURFACE.

THE EFFECTS OF SPREADING THE LIGHT SOURCE SLOWLY TO EXPAND THE COLOUR CHANGE FROM THE SURFACE.

THE EFFECTS OF SPREADING THE LIGHT SOURCE SLOWLY TO EXPAND THE COLOUR CHANGE FROM THE SURFACE.

THE EFFECTS OF SPREADING THE LIGHT SOURCE SLOWLY TO EXPAND THE COLOUR CHANGE FROM THE SURFACE.

## GROUND CONTROL TO MAJOR TOM

Commissioned for the iLight 2016 festival in Marina Bay, Singapore. The artwork takes inspiration from the blackness of outer space and how a single bright object is able to bring light and hues of colour to its surroundings. Taking the form of a 9 metre rocket with openings that is lined with special coloured filters.

### SCOPE OF WORK

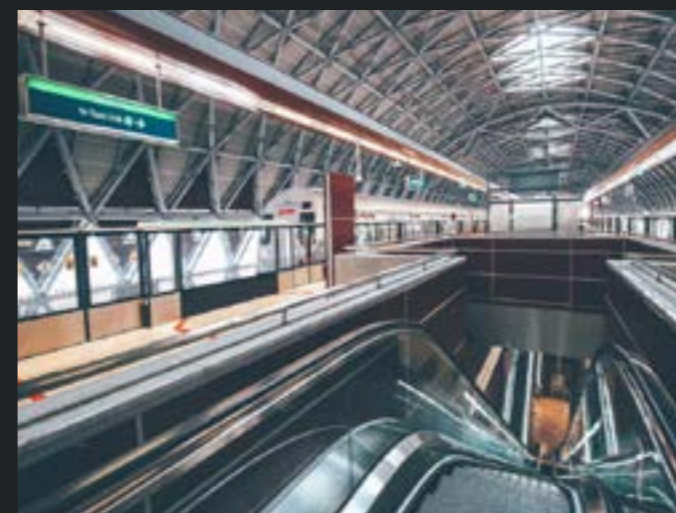
— Artwork

### PROJECT INFORMATION

— Artist : Rohan

— Completion : 2016





## TUAS WEST EXTENSION MRT | SINGAPORE

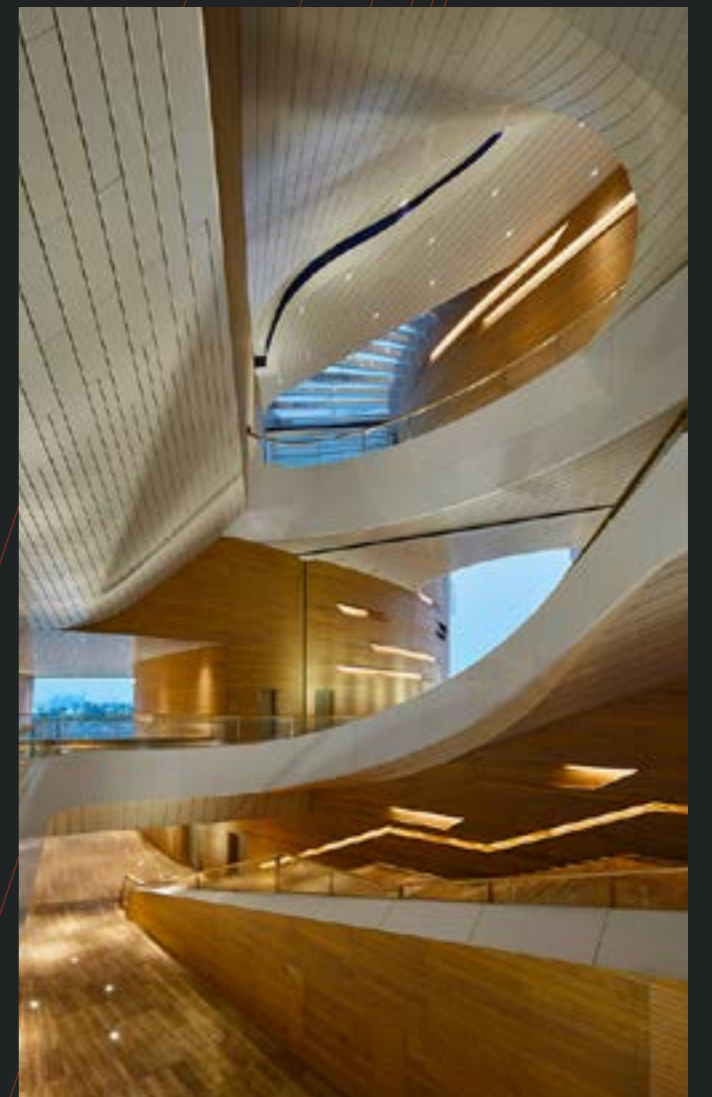
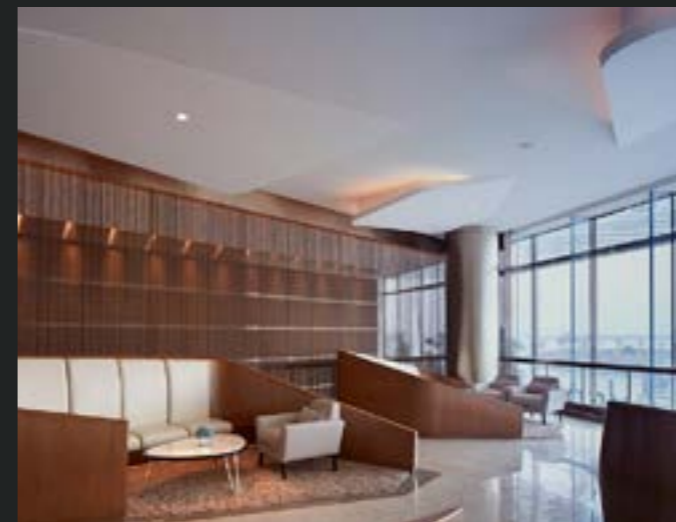
Consisting of 4 stations that links the East-West line to the west end of Singapore, these stations features vaulted ceilings and utilitarian layouts. They are designed with the highest functionality and efficiency to cater for peak hour human traffic that occurs in the highly industrialized area of Singapore. Lighting was designed to meet the highest greenmark standard and highly robust.

### SCOPE OF WORK

- Facade
- Landscape
- Public Spaces

### PROJECT INFORMATION

- Developer : LTA
- Architect : AEDAS
- Completion : 2016



## KEPELLAND MARINA | ZHONGSHAN

The Marina boasts stunning designs from a world renowned architectural company. Initially developed with Keppelland, Zhongshan Marina is the centerpiece of a new waterfront township which Socialight was tasked to design lighting that is unique and luxurious.

### SCOPE OF WORK

- Facade
- Landscape
- Front of House
- Sea Navigation

### PROJECT INFORMATION

- Developer : Keppelland
- Architect : UN Studio
- Interior Designer : UN Studio
- Completion : 2015





## KARMA KAGYUD BUDDHIST CENTRE | SINGAPORE

The centre is the main venue in Singapore for the Tibetan Buddhist community to congregate and socialize. It houses prayer halls, meditation rooms, a canteen and monks' accommodations. The lighting for the centre was designed to give flexibility for use on a daily basis or when there are festivities and ceremonies.

Working on funding by the public, and with support from lighting vendors, the spending on the lighting equipment was careful and minimized.

### SCOPE OF WORK

- Exterior
- Front of House
- Accommodation

### PROJECT INFORMATION

- Developer : KKBC
- Architect : Arya Architects
- Interior Designer : Shanghai Interior Circle
- Completion : 2017



## SINGAPORE FUNERAL PARLOUR

The funeral parlour is a one-stop centre for funeral services. Socialight provided our services to the parlour at minimal cost for all the areas to ensure continuity of the lighting ambience.

### SCOPE OF WORK

- Facade
- Landscape
- Front of House

### PROJECT INFORMATION

- Developer : Crescendas
- Architect : M-ply
- Completion : 2018



**SOCIALIGHT**  
CREATIVE LIGHTING STUDIO

**SINGAPORE**  
300B Joo Chiat Road,  
Singapore 409015  
T +65 6243 9260  
E singapore@socialight.sg

**JAKARTA**  
Jln Asem II, No. 10, Cilandak  
South Jakarta 12160, Indonesia  
T +62 21 723 0377  
E admin@socialight.sg

**HO CHI MINH CITY**  
LE-04, Lexington Building,  
No. 67, Mai Chi Tho Street, District 2,  
Ho Chi Minh City, Vietnam  
T +84 28 3505 8558  
E main@socialight.vn

[WWW.SOCIALIGHT.SG](http://WWW.SOCIALIGHT.SG)