

A photograph of a modern building's exterior at night, featuring a complex geometric pattern of illuminated lines and vertical light fixtures. The building's facade is dark, with the light fixtures creating a warm, golden glow. The text "EXTERIOR LIGHTING PORTFOLIO" is overlaid in white on the left side. The building's name "61 ROBINSON" is visible in the lower center, and "SOCIALIGHT" is in the bottom right corner.

EXTERIOR LIGHTING
PORTFOLIO

61 ROBINSON

SOCIALIGHT

The Studio

Socialight is an independent lighting design studio dedicated to understanding and implementing light. We provide lighting design and consultancy services for a wide range of projects that requires effective, impactful and efficient lighting. The firm is derived its from its predecessor, LightingImages, which has practiced lighting design out of Australia and South-East Asia since 1994.

Our roots have led us to realign and rethink our value in the ever-changing real-estate industry and thus our strategic rebranding into Socialight. In an energy conscious and value driven day and age, we now advocate ourselves to create responsible, sustainable lighting solutions that are value-justified.

The firm functions out of Singapore, Jakarta and Ho Chi Minh City. This gives us the mobility to serve projects and clients in Asia effectively. Socialight is currently engaged in projects throughout China, South-East Asia, the Middle East and the Pacific. Our experience spans from lighting master-planning, architectural, interiors and landscapes in a multitude of developments, including transport infrastructures, hotels and resorts, retail malls, mixed developments, offices, monuments and residences among others.

With more than 10 design capable personnel, resources and expertise are shared between the studios seamlessly to deliver quality solutions appropriate to the needs of the project. With individuals from diverse academic background and prior industrial experiences, we aim to deliver economically and environmentally sensitive lighting designs and solutions that is beyond 'cosmetic' lighting. Sustainability and prudence in our design is strongly emphasized to maximize the value of the client's investment.

Our clients include government bodies, property developers, hotel brands, capital investment managers and individuals who require good lighting design and sound project consultation to ensure the design is implemented. At Socialight , we work solely to the interest of our clients.

- Offices
- ▲ Completed Projects

■ VIETNAM
▲▲▲ Hẻm 285 Cách Mạng Tháng Tám,
Phường 12, District 10,
Ho Chi Minh City, Vietnam

■ SINGAPORE
▲▲▲ 300B Joo Chiat Road,
S427551

■ INDONESIA
▲▲▲ Jln. Asem II, No. 10, Cilandak
South Jakarta 12160

Lighting Design Services

1 CONCEPT DESIGN

We prefer to be involved in the project from its inception to fully understand the dynamics of the project and consider what are the design possibilities that can be infused with the architecture.

2 SCHEMATIC DESIGN

This stage is to strengthen the concept and to articulate the ideas into workable solutions. Calculations, layouts, control strategy is produced to ensure the design complies with technical and efficiency standards.

3 DESIGN DEVELOPMENT

Once the technical parameters and electrical requirements are coordinated, our work progresses into finer detailing that includes spot details, architectural integration, cabling issues and a finalised cost estimate of the overall lighting system.

4 BID/TENDER DOCUMENTATION

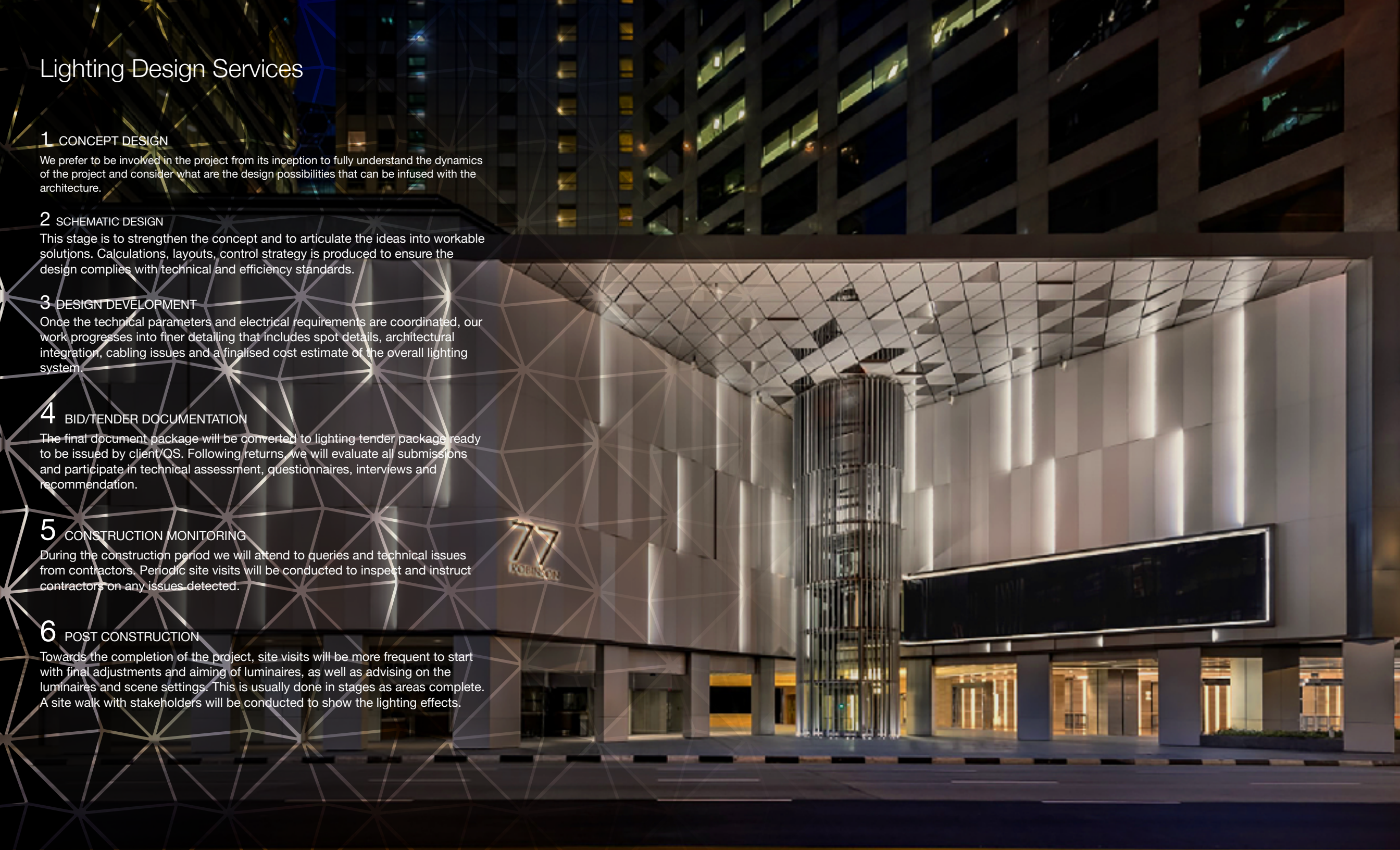
The final document package will be converted to lighting tender package ready to be issued by client/QS. Following returns, we will evaluate all submissions and participate in technical assessment, questionnaires, interviews and recommendation.

5 CONSTRUCTION MONITORING

During the construction period we will attend to queries and technical issues from contractors. Periodic site visits will be conducted to inspect and instruct contractors on any issues detected.

6 POST CONSTRUCTION

Towards the completion of the project, site visits will be more frequent to start with final adjustments and aiming of luminaires, as well as advising on the luminaires and scene settings. This is usually done in stages as areas complete. A site walk with stakeholders will be conducted to show the lighting effects.





EXTERIOR LIGHTING
SELECTED WORKS

KEPELLAND MARINA | ZHONGHAN

SCOPE OF WORKS

Facade
Landscape
Interiors
Nautical Lighting

PROJECT INFORMATION

Developer : Keppelland
Architect : UN Studio
ID : UN Studio
Completion : 2015

The Marina boasts stunning designs from a world renowned architectural company. Initially developed with Keppelland, Zhongshan Marina is the centerpiece of a new waterfront township which Socialight was tasked to design lighting that is unique and luxurious.



GALLERIA METROPOLE | HCMC

SCOPE OF WORKS
Facade

PROJECT INFORMATION
Developer : Sonkimland
Architect : DP Architects
Completion : 2022

The Galleria Metropole, situated across the river from District 1 of HCMC, is a mixed development consisting of 3 residential towers and retail spaces along the ground floor of the podium.



HILTON | ZHUZHOU

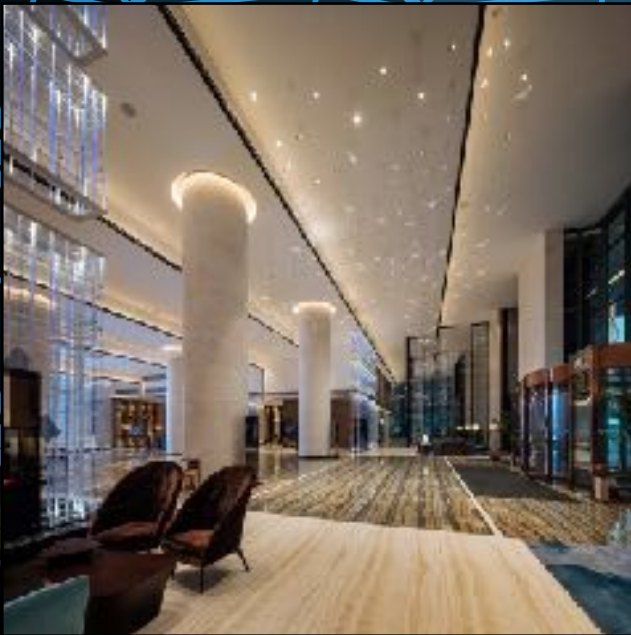
SCOPE OF WORKS

Facade
Landscape
Interior

PROJECT INFORMATION

Developer : N/A
Architect : Shanghai Xiandai
ID : PAL Design
Completion : 2014

The property sits beside the Xiangjiang river, overlooking Zhuzhou's city skyline. The design of public spaces was modern with glowing acrylic strips and glass swallows sweeping across the lobby from the entrance to the reception. The facade lighting took inspiration from the reflection of the city skyline on the rippling river. The development opened in late 2014.





IZUMI CITY CLUBHOUSE | DONG NAI

SCOPE OF WORKS

- Facade
- Landscape

PROJECT INFORMATION

- Developer : Nam Long Group
- Landscape Designer : Belt Collins
- Completion : 2023

The Clubhouse will initially function as as sales gallery to promote the surrounding township development. It is the first of many phases to be constructed in Dong Nai province and when completed, the clubhouse will be the focal point for the local community



MAPLETREE BUSINESS CITY |
SINGAPORE

SCOPE OF WORKS

Facade
Landscape
Interiors

PROJECT INFORMATION

Developer : Mapletree
Architect : P&T Consultants
Landscape Designer : Site Concepts International
Completion : 2014

A Grade A office complex with interconnected retail and transport facilities located in west Singapore. The facade lighting is a simple but strong emphasis on the architecture. The project attained Greenmark Platinum.



MOVENPICK | PHAN THIET

SCOPE OF WORKS

Facade
Landscape
Interior

PROJECT INFORMATION

Developer : NOVALAND
Architect : WATG
ID : NOOR
Completion : 2021

Situated in the coastal town of Phan Thiet, the Movenpick is a component of a much larger development that will eventually become a self-sustained township. The architecture, and thus, lighting, takes on a strong nautical theme.



VIVOCITY | SHANGHAI

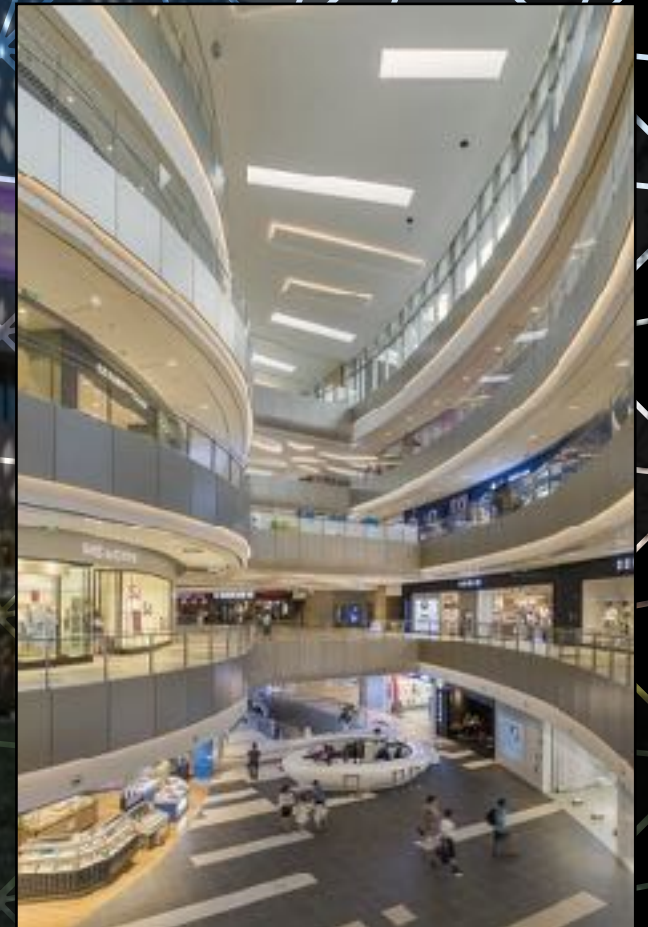
SCOPE OF WORKS

Facade
Landscape
Interiors

PROJECT INFORMATION

Developer : Mapletree
Architect : Aedas
Completion : 2016

Completed in May 2017, Vivocity Minhang Shanghai is a welcomed addition to the Vivocity Mall chain in Asia. Socialight was engaged to provide lighting design services to the exteriors and interiors of the mall.



DUSIT THANI LAGUNA | SINGAPORE

SCOPE OF WORKS

Facade
Landscape
Interior

PROJECT INFORMATION

Developer : Laguna Hotel
Architect : Meercurio Design Labs
Completion : 2021

The resort consist of 280 rooms and 8 villas nestled with a golf course. Socialight was engaged to provide the exterior and interior lighting design for the resort, golf club and spa, which was housed within a beautifully designed structure. The facade lighting highlights the modern architectural form while the interior lighting is designed to the hospitality language that is synonymous to the Dusit Thani brand.





GREENLAND PLAZA | ZHENGZHOU

SCOPE OF WORKS

Facade

PROJECT INFORMATION

Developer : Greenland

Architect : SOM

Completion : 2014

Zhengzhou Greenland Plaza is a mixed-use development housing a hotel on the upper floors and offices on the lower floors of the tower. Standing at 280metres, the tallest in Zhengzhou, the tower redefined the city's skyline with its advanced cladding design wrapping the profile of a classical column. The lighting study looked into the Song Yue Pagoda and other lit ancient towers, and drawing comparison to modern iconic skyscrapers of similar architectural style.





61 ROBINSON | SINGAPORE

SCOPE OF WORKS

- Facade
- Interiors

PROJECT INFORMATION

- Developer : ARA
- Architect : Forum Architects
- ID : Brewin Design Office
- Completion : 2022

61 Robinson Road is a high-rise commercial building located in the central business district of Singapore. The building is 28 stories high and has a net lettable area of approximately 135,000 square feet. Sociallight played on the art-deco vibe of the building and created



MARINA EAST DESALINATION PLANT | SINGAPORE

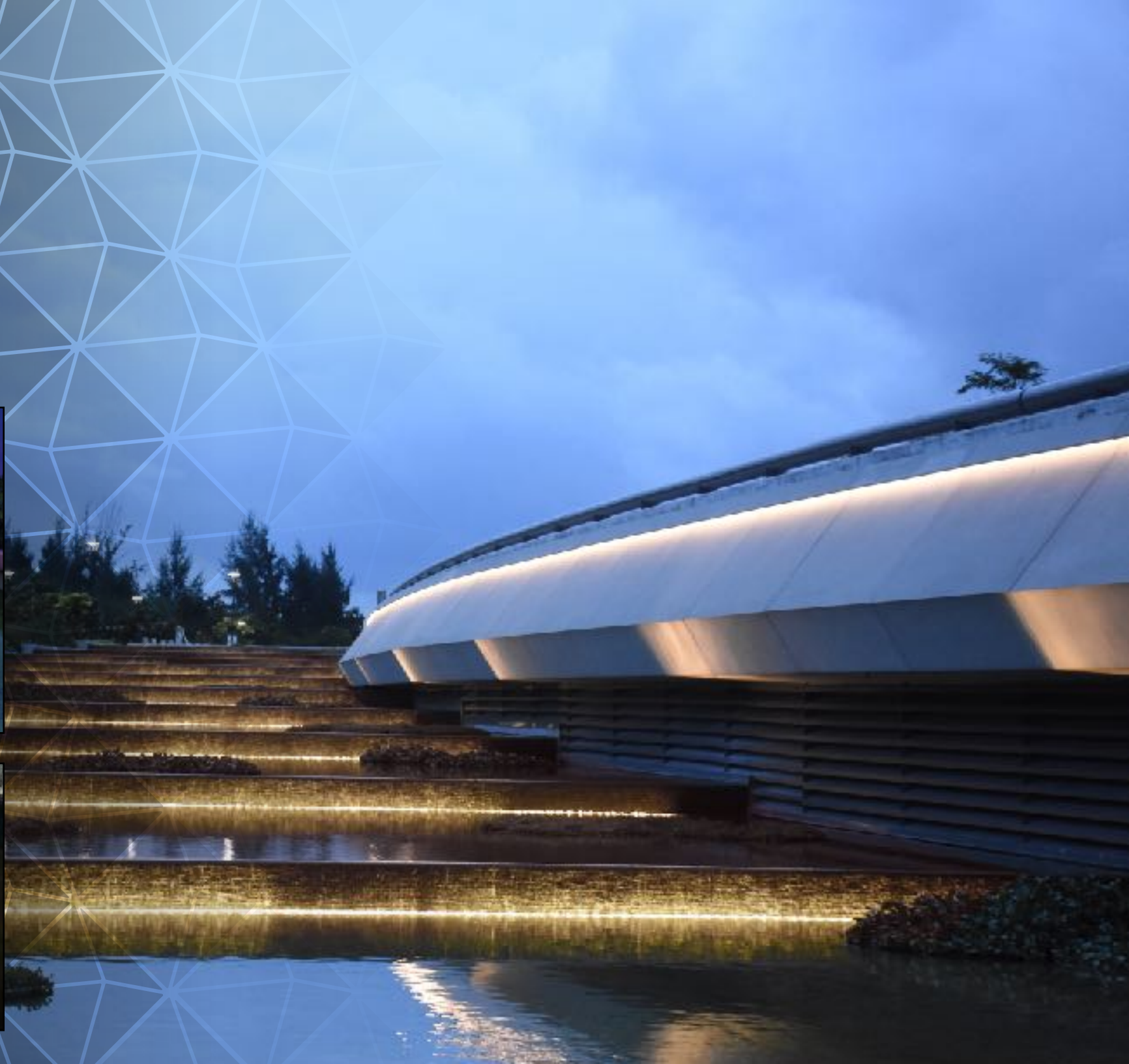
SCOPE OF WORKS

Facade
Landscape

PROJECT INFORMATION

Developer : Keppel Corporation
Architect : SAA
Completion : 2019

The Marina East Desalination Plant is a large-scale water treatment facility located in Singapore. Its is designed to efficiently and effectively remove salt and other impurities from seawater to produce clean drinking water for the city-state's population. Socialight was engaged to provide the exterior lighting scheme that is inviting to the public and is sensitive to the surrounding flora and fauna.





60 ANSON | SINGAPORE

SCOPE OF WORKS

Facade
Landscape
Interiors

PROJECT INFORMATION

Developer : Mapletree
Architect : DCA Architects
Completion : 2014

A Grade A office complex with interconnected retail and transport facilities located in west Singapore. The facade lighting is a simple but strong emphasis on the architecture. The project attained Greenmark Platinum.





HILTON FUXIAN LAKE | KUNMING

SCOPE OF WORKS

Facade
Landscape
Interiors

PROJECT INFORMATION

Developer : YMCI
Architect : SB Architects
Landscape : EDSA
Completion : 2015

The resort was completed in late 2015 together with a tournament grade golf green and spa clubhouse. Situated at the southern banks of Fuxian Lake, close to the city of Kunming, the resort has become a popular destination for weddings and corporate events. Lighting of the facade was carefully considered and minimized to preserve the pristine night sky



77 ROBINSON ROAD | SINGAPORE

SCOPE OF WORKS

Facade
Interiors

PROJECT INFORMATION

Developer : CLSA
Architect : Forum Architects
Completion : 2018

The addition and alteration works was carried out on this existing office building situated in the downtown CBD area of Singapore. Socialight was engaged to redesign the lighting in conjunction with Forum Architects. The building is certified greenmark compliant.



WESTIN HAITANG BAY | SANYA

SCOPE OF WORKS

Facade
Landscape
Interior

PROJECT INFORMATION

Developer : Hainan Jianfeng
Architect : N/A
ID : HBA
Completion : 2013

One of the premier resorts to line the Haitang Bay coastline is the Westin resort which was opened in late 2013. The resort features an extensive water park which included a 'lazy river' and a generous beach front bar. Socialight was commissioned to provide lighting design for the entire development including an exclusive clubhouse and residential villas.





FRASERS XUAN DINH | HANOI

SCOPE OF WORKS
Facade
Interiors

PROJECT INFORMATION
Developer : N/A
Architect : N/A
Completion : 2018

Interpreting the vision of flowing water from the nearby lake, the facade lighting features facing light lines that mimics ripples and waves.



BUDDHA TOOTH RELIC TEMPLE | SINGAPORE

SCOPE OF WORKS

- Facade
- Landscape
- Interior

PROJECT INFORMATION

- Developer : Metta
- Architect : Yi Architect
- Completion : 2012

The temple is a major tourist attraction in Chinatown Singapore. The temple houses a museum, prayer halls, a tooth relic chamber and accommodation for the monks.



LAVENDER SPA | HCMC

SCOPE OF WORKS

Facade
Landscape
Interior

PROJECT INFORMATION

Developer : Chang
Architect : Pure Projects
Completion : 2020

A recent project completion in Ho Chi Minh City's District 3. The Lavender Spa by Chang Ly has been pioneering the beauty treatments for over 15 years and now has moved into a purpose-built premise.



LAVENDER SPA | HCMC

SCOPE OF WORKS

Facade
Landscape

PROJECT INFORMATION

Developer : Alam Sutera
Architect : PT. Siluet Nyoman Nuarta
Completion : 2018

The Garuda Wisnu Kencana Statue stands at 136m above sea level at the southern tip of Bali. Socialight was engaged to provide an artistic interpretation of the statue through light and to emphasize its significance to the residents of Bali. The lighting system was made flexible and easily controllable by the operators, with the ability to tether into a larger lighting solution for future expansion.



THANK YOU
Cảm ơn

SOCIALIGHT